

A25000

Leader in Biomolecular Solutions for Life Science



## CaMKII Rabbit mAb

Catalog No.: A25000

Recombinant

### Basic Information

#### Observed MW

50-60kDa

#### Calculated MW

54kDa/72kDa/56kDa/62kDa

#### Category

SMab Recombinant Monoclonal Antibody

#### Applications

WB, ELISA

#### Cross-Reactivity

Human, Mouse, Rat

#### CloneNo number

ARC63694

### Background

The product of this gene belongs to the serine/threonine protein kinases family, and to the Ca(2+)/calmodulin-dependent protein kinases subfamily. Calcium signaling is crucial for several aspects of plasticity at glutamatergic synapses. This calcium calmodulin-dependent protein kinase is composed of four different chains: alpha, beta, gamma, and delta. The alpha chain encoded by this gene is required for hippocampal long-term potentiation (LTP) and spatial learning. In addition to its calcium-calmodulin (CaM)-dependent activity, this protein can undergo autophosphorylation, resulting in CaM-independent activity. Several transcript variants encoding distinct isoforms have been identified for this gene.

### Recommended Dilutions

WB 1:500 - 1:1000

IP 0.5µg-4µg antibody for  
400µg-600µg extracts of  
whole cells

### Immunogen Information

#### Gene ID

815/ 816/ 817/ 818

#### Swiss Prot

Q9UQM7/Q13554/Q13557/Q13555

#### Immunogen

A synthetic peptide corresponding to a sequence within amino acids 200-300 of human CaMKII (NP\_741960.1).

#### Synonyms

CAMKA; MRD53; MRT63; CaMKIIalpha; CaMKIINalpha; CaMKII

### Contact



[www.abclonal.com](http://www.abclonal.com)

### Product Information

#### Source

Rabbit

#### Isotype

IgG

#### Purification

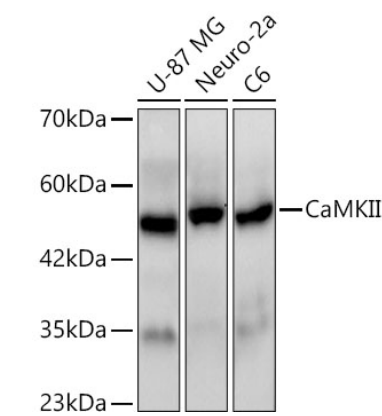
Affinity purification

#### Storage

Store at -20°C. Avoid freeze / thaw cycles.

Buffer: PBS with 0.05% proclin300, 0.05% BSA, 50% glycerol, pH7.3.

Validation Data



Western blot analysis of various lysates using CaMKII Rabbit mAb (A25000) at 1:1000 dilution.  
Secondary antibody: HRP Goat Anti-Rabbit IgG (H+L) (A5014) at 1:10000 dilution.  
Lysates/proteins: 25ug per lane.  
Blocking buffer: 3% nonfat dry milk in TBST.  
Detection: ECL Basic Kit (RM00020).  
Exposure time: 30s.