

A24792

Leader in Biomolecular Solutions for Life Science



## ABflo® 594 Rabbit anti-Human CD55 mAb

Catalog No.: A24792

### Basic Information

#### Observed MW

Refer to figures

#### Calculated MW

39kDa/41kDa/48kDa/56kDa/59kDa

#### Category

SMab Recombinant Monoclonal Antibody

#### Applications

FC

#### Cross-Reactivity

Human

#### CloneNo number

ARC54520-ABflo594

#### Conjugate

ABflo® 594. Ex:588nm. Em:604nm.

### Background

This gene encodes a glycoprotein involved in the regulation of the complement cascade. Binding of the encoded protein to complement proteins accelerates their decay, thereby disrupting the cascade and preventing damage to host cells. Antigens present on this protein constitute the Cromer blood group system (CROM). Alternative splicing results in multiple transcript variants. The predominant transcript variant encodes a membrane-bound protein, but alternatively spliced transcripts may produce soluble proteins.

### Recommended Dilutions

FC 5 µl per 10<sup>6</sup> cells in  
100 µl volume

### Immunogen Information

#### Gene ID

1604

#### Swiss Prot

P08174

#### Immunogen

Recombinant fusion protein containing a sequence corresponding to amino acids 35-353 of human CD55 (NP\_000565.1).

#### Synonyms

CR; TC; DAF; CROM; CHAPLE; CD55 molecule

### Contact



[www.abclonal.com](http://www.abclonal.com)

### Product Information

#### Source

Rabbit

#### Isotype

IgG

#### Purification

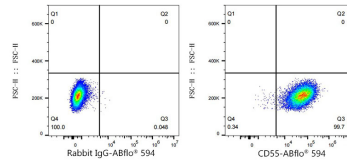
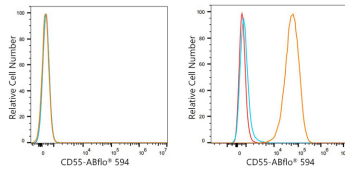
Affinity purification

#### Storage

Store at 2-8°C. Avoid freeze.

Buffer: PBS with 0.03% proclin300, 0.2% BSA, pH7.3.

## Validation Data



Flow cytometry:  $1 \times 10^6$  SH-SY5Y cells (negative control, left) and K-562 cells (right) were surface-stained with ABflo® 594 Rabbit anti-Human CD55 mAb (A24792, 5  $\mu$ l/Test, orange line) or ABflo® 594 Rabbit IgG isotype control (A23821, 5  $\mu$ l/Test, blue line). Non-fluorescently stained cells were used as blank control (red line).

Flow cytometry:  $1 \times 10^6$  K-562 cells were surface-stained with ABflo® 594 Rabbit IgG isotype control (A23821, 5  $\mu$ l/Test, left) or ABflo® 594 Rabbit anti-Human CD55 mAb (A24792, 5  $\mu$ l/Test, right).