

A24681

Leader in Biomolecular Solutions for Life Science



ABflo® 594 Rabbit anti-Mouse CD272/BTLA mAb

Catalog No.: A24681

Basic Information

Observed MW

Calculated MW

34kDa

Category

SMab Recombinant Monoclonal Antibody

Applications

FC

Cross-Reactivity

Mouse

CloneNo number

ARC63351-ABflo594

Conjugate

ABflo® 594. Ex:588nm. Em:604nm.

Background

Enables signaling receptor activity. Acts upstream of or within immune response-regulating cell surface receptor signaling pathway; negative regulation of B cell proliferation; and negative regulation of alpha-beta T cell proliferation. Located in external side of plasma membrane. Is integral component of plasma membrane. Orthologous to human BTLA (B and T lymphocyte associated).

Recommended Dilutions

FC 5 µl per 10⁶ cells in
100 µl volume

Immunogen Information

Gene ID

208154

Swiss Prot

Q7TSA3

Immunogen

Recombinant fusion protein containing a sequence corresponding to amino acids 30-176 of mouse CD272/BTLA (NP_001032808.2).

Synonyms

A630002H24

Contact



www.abclonal.com

Product Information

Source

Rabbit

Isotype

IgG

Purification

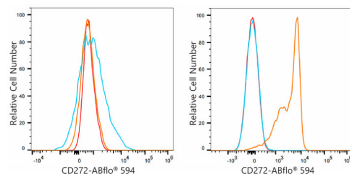
Affinity purification

Storage

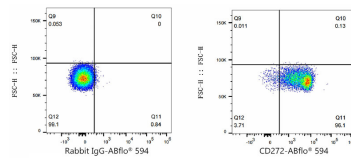
Store at 2-8°C. Avoid freeze.

Buffer: PBS with 0.03% proclin300,0.2% BSA,pH7.3.

Validation Data



Flow cytometry: 1×10^6 C2C12 cells (negative control, left) and C57/BL6 splenocytes (right) were surface-stained with ABflo® 594 Rabbit anti-Mouse CD272/BTLA mAb (A24681, 5 μ l/Test, orange line) or ABflo® 594 Rabbit IgG isotype control (A23821, 5 μ l/Test, blue line). Non-fluorescently stained cells were used as blank control (red line).



Flow cytometry: 1×10^6 C57/BL6 splenocytes were surface-stained with ABflo® 594 Rabbit IgG isotype control (A23821, 5 μ l/Test, left) or ABflo® 594 Rabbit anti-Mouse CD272/BTLA mAb (A24681, 5 μ l/Test, right).