

A24548

Leader in Biomolecular Solutions for Life Science



## Mouse Ythdc1 Rabbit pAb

Catalog No.: A24548

### Basic Information

**Observed MW**

110kDa

**Calculated MW**

85kDa

**Category**

Polyclonal Antibody

**Applications**

WB, ELISA

**Cross-Reactivity**

Mouse

### Background

Predicted to enable N6-methyladenosine-containing RNA binding activity and mRNA binding activity. Involved in posttranscriptional regulation of gene expression. Acts upstream of or within gamete generation; in utero embryonic development; and regulation of mRNA processing. Located in nucleus. Orthologous to human YTHDC1 (YTH domain containing 1).

### Recommended Dilutions

WB 1:1000 - 1:5000

### Immunogen Information

**Gene ID**

231386

**Swiss Prot**

E9Q5K9

**Immunogen**

Recombinant fusion protein containing a sequence corresponding to amino acids 597-736 of mouse Ythdc1 (NP\_808348.2).

**Synonyms**

mKIAA1966; A730098D12Rik; Mouse Ythdc1

### Contact



[www.abclonal.com](http://www.abclonal.com)

### Product Information

**Source**

Rabbit

**Isotype**

IgG

**Purification**

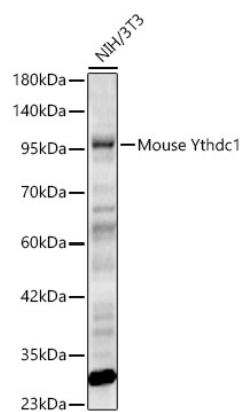
Affinity purification

**Storage**

Store at -20°C. Avoid freeze / thaw cycles.

Buffer: PBS with 0.05% proclin300, 50% glycerol, pH7.3.

## Validation Data



Western blot analysis of lysates from NIH/3T3 cells, using Mouse Ythdc1 Rabbit pAb (A24548) at 1:2000 dilution.

Secondary antibody: HRP Goat Anti-Rabbit IgG (H+L) (AS014) at 1:10000 dilution.

Lysates/proteins: 25ug per lane.

Blocking buffer: 3% nonfat dry milk in TBST.

Detection: ECL Enhanced Kit (RM00021).

Exposure time: 60s.