

A24411

Leader in Biomolecular Solutions for Life Science



## ABflo® 647 Rabbit anti-Human CD26/DPP4 mAb

Catalog No.: A24411

### Basic Information

#### Observed MW

Refer to figures

#### Calculated MW

88kDa

#### Category

SMab Recombinant Monoclonal Antibody

#### Applications

FC

#### Cross-Reactivity

Human

#### CloneNo number

ARC59223-ABf647

#### Conjugate

ABflo® 647. Ex:648nm. Em:664nm.

### Background

The protein encoded by this gene is identical to adenosine deaminase complexing protein-2, and to the T-cell activation antigen CD26. It is an intrinsic membrane glycoprotein and a serine exopeptidase that cleaves X-proline dipeptides from the N-terminus of polypeptides.

### Recommended Dilutions

FC 5 µl per 10<sup>6</sup> cells in  
100 µl volume

### Immunogen Information

#### Gene ID

1803

#### Swiss Prot

P27487

#### Immunogen

Recombinant fusion protein containing a sequence corresponding to amino acids 29-766 of human CD26/DPP4(NP\_001926.2)

#### Synonyms

DPP4; ADABP; ADCP2; CD26; DPPIV; TP103; dipeptidyl peptidase 4

### Contact



[www.abclonal.com](http://www.abclonal.com)

### Product Information

#### Source

Rabbit

#### Isotype

IgG

#### Purification

Affinity purification

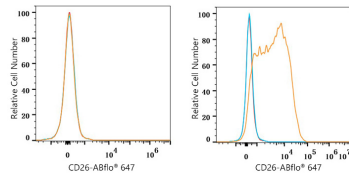
#### Storage

Store at 2-8°C. Avoid freeze.

Buffer: PBS with 0.03% proclin300,0.2% BSA,pH7.3.

## Validation Data

---



Flow cytometry:  $1 \times 10^6$  K-562 cells (negative control, left) and NCI-H2452 cells (right) were surface-stained with ABflo® 647 Rabbit anti-Human CD26/DPP4 mAb (A24411, 5  $\mu$ l/Test, orange line) or ABflo® 647 Rabbit IgG isotype control (A22070, 5  $\mu$ l/Test, blue line). Non-fluorescently stained cells were used as blank control (red line).