

A24410

Leader in Biomolecular Solutions for Life Science



ABflo® 594 Rabbit anti-Human Podoplanin mAb

Catalog No.: A24410

Basic Information

Observed MW

Calculated MW

12kDa/16kDa/18kDa/24kDa

Category

SMab Recombinant Monoclonal Antibody

Applications

FC

Cross-Reactivity

Human

CloneNo number

ARC63004-ABflo594

Conjugate

ABflo® 594. Ex:588nm. Em:604nm.

Background

This gene encodes a type-I integral membrane glycoprotein with diverse distribution in human tissues. The physiological function of this protein may be related to its mucin-type character. The homologous protein in other species has been described as a differentiation antigen and influenza-virus receptor. The specific function of this protein has not been determined but it has been proposed as a marker of lung injury. Alternatively spliced transcript variants encoding different isoforms have been identified.

Recommended Dilutions

FC 5 µl per 10⁶ cells in
100 µl volume

Immunogen Information

Gene ID

10630

Swiss Prot

Q86YL7

Immunogen

Recombinant fusion protein containing a sequence corresponding to amino acids 21-123 of Human Podoplanin(NM_006474.5).

Synonyms

PDPN; AGGRUS; GP36; GP40; Gp38; HT1A-1; OTS8; PA2.26; T1A; T1A-2; T1A2; T11A; podoplanin

Contact



www.abclonal.com

Product Information

Source

Rabbit

Isotype

IgG

Purification

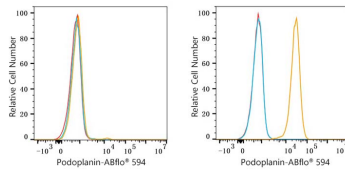
Affinity purification

Storage

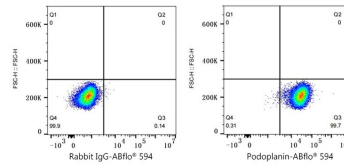
Store at 2-8°C. Avoid freeze.

Buffer: PBS with 0.03% proclin300,0.2% BSA,pH7.3.

Validation Data



Flow cytometry: 1×10^6 knockout (KO) 293T cells (negative control, Left) and 293T (right) cells were surface-stained with ABflo® 594 Rabbit anti-Human Podoplanin mAb (A24410, 5 μ l/Test, orange line) or ABflo® 594 Rabbit IgG isotype control (A23821, 5 μ l/Test, blue line). Non-fluorescently stained cells were used as blank control (red line).



Flow cytometry: 1×10^6 293T cells were surface-stained with ABflo® 594 Rabbit IgG isotype control (A23821, 5 μ l/Test, left) or ABflo® 594 Rabbit anti-Human Podoplanin mAb (A24410, 5 μ l/Test, right).