

A2433

Leader in Biomolecular Solutions for Life Science



KLF10 Rabbit mAb

Catalog No.: A2433

Recombinant

1 Publications

Basic Information

Observed MW

53kDa

Calculated MW

53kDa

Category

SMab Recombinant Monoclonal Antibody

Applications

WB,ELISA

Cross-Reactivity

Human,Mouse

CloneNo number

ARC1921

Background

This gene encodes a member of a family of proteins that feature C2H2-type zinc finger domains. The encoded protein is a transcriptional repressor that acts as an effector of transforming growth factor beta signaling. Activity of this protein may inhibit the growth of cancers, particularly pancreatic cancer. Alternative splicing results in multiple transcript variants.

Recommended Dilutions

WB 1:500 - 1:1000

Immunogen Information

Gene ID

7071

Swiss Prot

Q13118

Immunogen

A synthetic peptide corresponding to a sequence within amino acids 1-100 of human KLF10 (Q13118).

Synonyms

EGRA; TIEG; TIEG1; EGR-alpha; KLF10

Contact



www.abclonal.com

Product Information

Source

Rabbit

Isotype

IgG

Purification

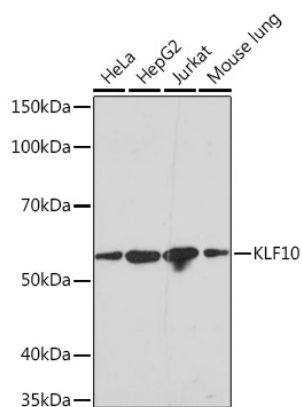
Affinity purification

Storage

Store at -20°C. Avoid freeze / thaw cycles.

Buffer: PBS with 0.02% sodium azide,0.05% BSA,50% glycerol,pH7.3.

Validation Data



Western blot analysis of various lysates using KLF10 Rabbit mAb (A2433) at 1:1000 dilution.
Secondary antibody: HRP Goat Anti-Rabbit IgG (H+L) (AS014) at 1:10000 dilution.
Lysates/proteins: 25µg per lane.
Blocking buffer: 3% nonfat dry milk in TBST.
Detection: ECL Basic Kit (RM00020).
Exposure time: 3min.