

A24267

Leader in Biomolecular Solutions for Life Science



ABflo® 594 Rabbit anti-Human EGFR mAb

Catalog No.: A24267

Basic Information

Observed MW

Calculated MW

44kDa/69kDa/77kDa/134kDa

Category

SMab Recombinant Monoclonal Antibody

Applications

FC

Cross-Reactivity

Human

CloneNo number

ARC61443-ABflo594

Conjugate

ABflo® 594. Ex:588nm. Em:604nm.

Background

The protein encoded by this gene is a transmembrane glycoprotein that is a member of the protein kinase superfamily. This protein is a receptor for members of the epidermal growth factor family. EGFR is a cell surface protein that binds to epidermal growth factor. Binding of the protein to a ligand induces receptor dimerization and tyrosine autophosphorylation and leads to cell proliferation. Mutations in this gene are associated with lung cancer.

Recommended Dilutions

FC 5 µl per 10⁶ cells in
100 µl volume

Immunogen Information

Gene ID

1956

Swiss Prot

P00533

Immunogen

Recombinant fusion protein containing a sequence corresponding to amino acids 335-525 of human EGFR(NP_005219.2).

Synonyms

EGFR; ERBB; ERBB1; HER1; NISBD2; PIG61; mENA; epidermal growth factor receptor

Contact



www.abclonal.com

Product Information

Source

Rabbit

Isotype

IgG

Purification

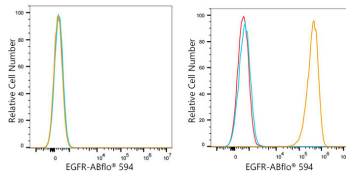
Affinity purification

Storage

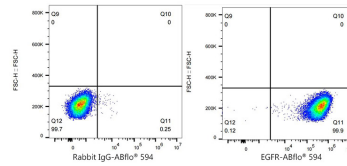
Store at 2-8°C. Avoid freeze.

Buffer: PBS with 0.03% proclin300,0.2% BSA,pH7.3.

Validation Data



Flow cytometry: 1×10^6 Jurkat cells (negative control, left) and A-431 cells (right) were surface-stained with ABflo® 594 Rabbit anti-Human EGFR mAb(A24267, 5 μ l/Test, orange line) or ABflo® 594 Rabbit IgG isotype control (A23821, 5 μ l/Test, blue line). Non-fluorescently stained cells were used as blank control (red line).



Flow cytometry: 1×10^6 A-431 cells were surface-stained with ABflo® 594 Rabbit IgG isotype control (A23821, 5 μ l/Test, left) or ABflo® 594 Rabbit anti-Human EGFR mAb(A24267, 5 μ l/Test, right).