

A24225

Leader in Biomolecular Solutions for Life Science



# ABflo® 594 Rabbit anti-Human $\beta$ 2 Microglobulin mAb

Catalog No.: A24225

## Basic Information

### Observed MW

Refer to figures

### Calculated MW

13kDa

### Category

SMab Recombinant Monoclonal Antibody

### Applications

FC

### Cross-Reactivity

Human

### CloneNo number

ARC60950-ABflo594

### Conjugate

ABflo® 594. Ex:588nm. Em:604nm.

## Background

This gene encodes a serum protein found in association with the major histocompatibility complex (MHC) class I heavy chain on the surface of nearly all nucleated cells. The protein has a predominantly beta-pleated sheet structure that can form amyloid fibrils in some pathological conditions. The encoded antimicrobial protein displays antibacterial activity in amniotic fluid. A mutation in this gene has been shown to result in hypercatabolic hypoproteinemia.

## Recommended Dilutions

FC 5  $\mu$ l per  $10^6$  cells in  
100  $\mu$ l volume

## Immunogen Information

### Gene ID

567

### Swiss Prot

P61769

### Immunogen

Recombinant fusion protein containing a sequence corresponding to amino acids 21-119 of human  $\beta$ 2 Microglobulin(NP\_004039.1).

### Synonyms

B2M; IMD43; beta-2-microglobulin

## Contact



[www.abclonal.com](http://www.abclonal.com)

## Product Information

### Source

Rabbit

### Isotype

IgG

### Purification

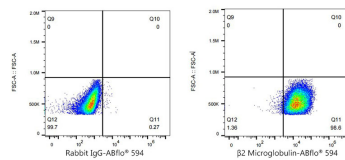
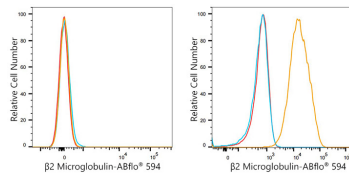
Affinity purification

### Storage

Store at 2-8°C. Avoid freeze.

Buffer: PBS with 0.03% proclin300,0.2% BSA,pH7.3.

## Validation Data



Flow cytometry:  $1 \times 10^6$  Daudi cells (negative control, left) and HeLa (right) were surface-stained with ABflo® 594 Rabbit anti-Human  $\beta 2$  Microglobulin mAb (A24225, 5  $\mu$ l/Test, orange line) or ABflo® 594 Rabbit IgG isotype control (A23821, 5  $\mu$ l/Test, blue line). Non-fluorescently stained cells were used as blank control (red line).

Flow cytometry:  $1 \times 10^6$  HeLa were surface-stained with ABflo® 594 Rabbit IgG isotype control (A23821, 5  $\mu$ l/Test, left) or ABflo® 594 Rabbit anti-Human  $\beta 2$  Microglobulin mAb (A24225, 5  $\mu$ l/Test, right).