

A24101

Leader in Biomolecular Solutions for Life Science



ABflo® 647 Rabbit anti-Mouse CD19 mAb

Catalog No.: A24101

Basic Information

Observed MW

Calculated MW

60kDa

Category

SMab Recombinant Monoclonal Antibody

Applications

FC

Cross-Reactivity

Mouse

CloneNo number

ARC5140-01-ABf647

Conjugate

ABflo® 647. Ex:648nm. Em:664nm.

Background

Involved in several processes, including B-1 B cell differentiation; positive regulation of phosphatidylinositol 3-kinase activity; and positive regulation of release of sequestered calcium ion into cytosol. Acts upstream of or within B cell receptor signaling pathway. Located in external side of plasma membrane. Is integral component of plasma membrane. Is expressed in liver and spleen. Human ortholog(s) of this gene implicated in common variable immunodeficiency. Orthologous to human CD19 (CD19 molecule).

Recommended Dilutions

FC 5 µl per 10⁶ cells in
100 µl volume

Immunogen Information

Gene ID

12478

Swiss Prot

P25918

Immunogen

Recombinant protein of mouse CD19.

Synonyms

Contact



www.abclonal.com

Product Information

Source

Rabbit

Isotype

IgG

Purification

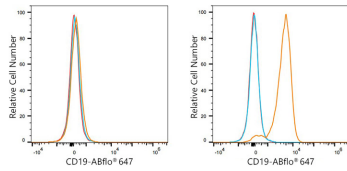
Affinity purification

Storage

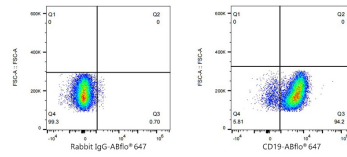
Store at 2-8°C. Avoid freeze.

Buffer: PBS with 0.03% proclin300,0.2% BSA,pH7.3.

Validation Data



Flow cytometry: 1×10^6 RAW 264.7 cells (negative control, left) and A20 cells (right) were surface-stained with ABflo® 647 Rabbit anti-Mouse CD19 mAb (A24101, 5 μ l/Test, orange line) or ABflo® 647 Rabbit IgG isotype control (A22070, 5 μ l/Test, blue line). Non-fluorescently stained cells were used as blank control (red line).



Flow cytometry: 1×10^6 A20 cells were surface-stained with ABflo® 647 Rabbit IgG isotype control (A22070, 5 μ l/Test, left) or ABflo® 647 Rabbit anti-Mouse CD19 mAb (A24101, 5 μ l/Test, right).