

A24006

Leader in Biomolecular Solutions for Life Science



14-3-3 zeta/YWHAZ Rabbit mAb

Catalog No.: A24006

Recombinant

Basic Information

Observed MW

30kDa

Calculated MW

19kDa/28kDa

Category

SMab Recombinant Monoclonal Antibody

Applications

WB,IF/ICC,ELISA

Cross-Reactivity

Human,Mouse,Rat

CloneNo number

ARC62843

Background

This gene product belongs to the 14-3-3 family of proteins which mediate signal transduction by binding to phosphoserine-containing proteins. This highly conserved protein family is found in both plants and mammals, and this protein is 99% identical to the mouse, rat and sheep orthologs. The encoded protein interacts with IRS1 protein, suggesting a role in regulating insulin sensitivity. Several transcript variants that differ in the 5' UTR but that encode the same protein have been identified for this gene.

Recommended Dilutions

WB 1:2000 - 1:10000

IF/ICC 1:50 - 1:200

Immunogen Information

Gene ID

7534

Swiss Prot

P63104

Immunogen

A synthetic peptide corresponding to a sequence within amino acids 145-245 of human YWHAZ (NP_002267.2).

Synonyms

HEL4; YWHAD; KCIP-1; HEL-S-3; POPCHAS; HEL-S-93; 14-3-3-zeta; 14-3-3 zeta/YWHAZ

Contact



www.abclonal.com

Product Information

Source

Rabbit

Isotype

IgG

Purification

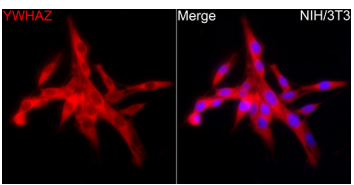
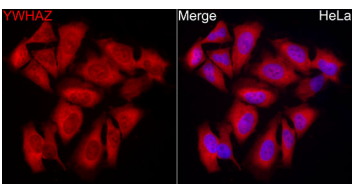
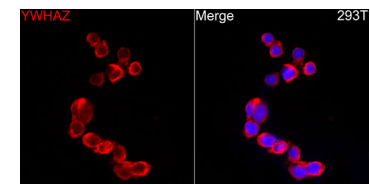
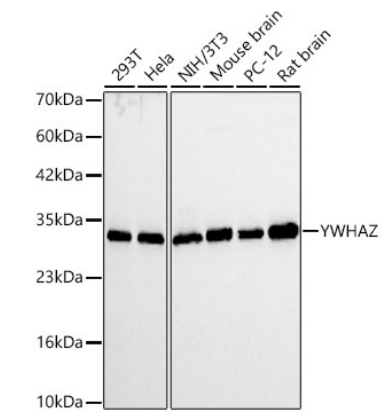
Affinity purification

Storage

Store at -20°C. Avoid freeze / thaw cycles.

Buffer: PBS with 0.05% proclin300,0.05% BSA,50% glycerol,pH7.3.

Validation Data



Immunofluorescence analysis of 293T cells using YWHAZ Rabbit mAb (A24006) at dilution of 1:200 (40x lens). Blue: DAPI for nuclear staining.

Immunofluorescence analysis of HeLa cells using YWHAZ Rabbit mAb (A24006) at dilution of 1:200 (40x lens). Blue: DAPI for nuclear staining.

Immunofluorescence analysis of NIH/3T3 cells using YWHAZ Rabbit mAb (A24006) at dilution of 1:200 (40x lens). Blue: DAPI for nuclear staining.