

A23982

Leader in Biomolecular Solutions for Life Science



ABflo® 647 Rabbit anti-Mouse CD98 mAb

Catalog No.: A23982

Basic Information

Observed MW

Refer to figures

Calculated MW

58kDa

Category

SMab Recombinant Monoclonal Antibody

Applications

FC

Cross-Reactivity

Mouse

CloneNo number

ARC61479-ABflo647

Conjugate

ABflo® 647. Ex:648nm. Em:664nm.

Background

Predicted to enable amino acid transmembrane transporter activity and double-stranded RNA binding activity. Predicted to be involved in carboxylic acid transport and viral entry into host cell. Predicted to act upstream of or within response to exogenous dsRNA. Located in apical pole of neuron. Is active in synapse. Is expressed in several structures, including alimentary system; brain; genitourinary system; hemolymphoid system gland; and spinal cord. Orthologous to human SLC3A2 (solute carrier family 3 member 2).

Recommended Dilutions

FC 5 µl per 10⁶ cells in
100 µl volume

Immunogen Information

Gene ID

17254

Swiss Prot

P10852

Immunogen

Recombinant Protein corresponding to a sequence within amino acids 105-526 of mouse CD98 (NP_032603.3).

Synonyms

4F2; Cd98; Ly10; Mdu1; 4F2HC; Ly-10; NACAE; Ly-m10; Mgp-2hc

Contact



www.abclonal.com

Product Information

Source

Rabbit

Isotype

IgG

Purification

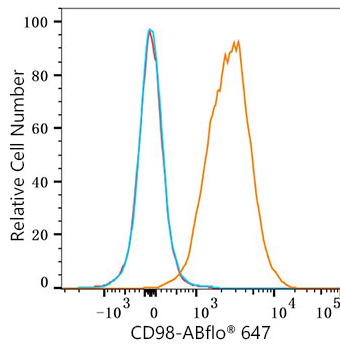
Affinity purification

Storage

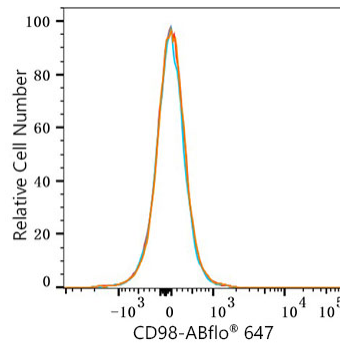
Store at 2-8°C. Avoid freeze.

Buffer: PBS with 0.03% proclin300,0.2% BSA,pH7.3.

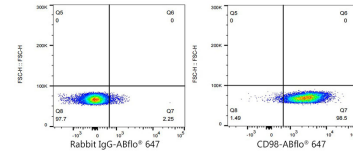
Validation Data



Flow cytometry: 1×10^6 C57BL/6 mouse splenocyte were surface-stained with ABflo® 647 Rabbit anti-Mouse CD98 mAb(A23982,5 μ l/Test,orange line) or ABflo® 647 Rabbit IgG isotype control (A22070,5 μ l/Test,blue line).Non-fluorescently stained C57BL/6 mouse splenocyte were used as blank control (red line).



Flow cytometry: 1×10^6 SH-SY5Y cells(negative control) were surface-stained with ABflo® 647 Rabbit anti-Mouse CD98 mAb(A23982,5 μ l/Test,orange line) or ABflo® 647 Rabbit IgG isotype control (A22070,5 μ l/Test,blue line).Non-fluorescently stained SH-SY5Y were used as blank control (red line).



Flow cytometry: 1×10^6 C57BL/6 mouse splenocyte were surface-stained with ABflo® 647 Rabbit IgG isotype control (A22070,5 μ l/Test,left) or ABflo® 647 Rabbit anti-Mouse CD98 mAb(A23982,5 μ l/Test,right).