

A23929

Leader in Biomolecular Solutions for Life Science



## IFN gamma Rabbit mAb

Catalog No.: A23929

Recombinant

### Basic Information

#### Observed MW

17kDa

#### Calculated MW

19kDa

#### Category

SMab Recombinant Monoclonal Antibody

#### Applications

WB, ELISA

#### Cross-Reactivity

Human

#### CloneNo number

ARC52882

### Background

This gene encodes a soluble cytokine that is a member of the type II interferon class. The encoded protein is secreted by cells of both the innate and adaptive immune systems. The active protein is a homodimer that binds to the interferon gamma receptor which triggers a cellular response to viral and microbial infections. Mutations in this gene are associated with an increased susceptibility to viral, bacterial and parasitic infections and to several autoimmune diseases.

### Recommended Dilutions

WB 1:2000 - 1:6000

### Immunogen Information

#### Gene ID

3458

#### Swiss Prot

P01579

#### Immunogen

Recombinant fusion protein containing a sequence corresponding to amino acids 24-161 of human IFN gamma (NP\_000610.2).

#### Synonyms

IFG; IFI; IMD69; IFN gamma

### Contact



[www.abclonal.com](http://www.abclonal.com)

### Product Information

#### Source

Rabbit

#### Isotype

IgG

#### Purification

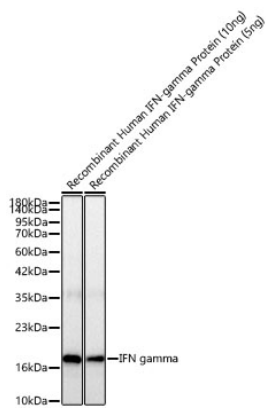
Affinity purification

#### Storage

Store at -20°C. Avoid freeze / thaw cycles.

Buffer: PBS with 0.05% proclin300, 0.05% BSA, 50% glycerol, pH7.3.

Validation Data



Western blot analysis of recombinant Human IFN gamma Protein, using IFN gamma Rabbit mAb (A23929) at 1:5000 dilution.  
Secondary antibody: HRP Goat Anti-Rabbit IgG (H+L) (AS014) at 1:10000 dilution.  
Lysates/proteins: 10ng/5ng per lane.  
Blocking buffer: 3% nonfat dry milk in TBST.  
Detection: ECL Basic Kit (RM00020).  
Exposure time: 5s.