

A23899

Leader in Biomolecular Solutions for Life Science



ABflo® 594 Rabbit anti-Human/Mouse CD55/DAF mAb

Catalog No.: A23899

Basic Information

Observed MW

Calculated MW
42KDa

Category

SMab Recombinant Monoclonal Antibody

Applications

FC

Cross-Reactivity

Human, Mouse

CloneNo number

ARC60934-ABflo594

Conjugate

ABflo® 594. Ex:588nm. Em:604nm.

Background

This gene encodes an inhibitor of both the classical and the alternative pathways of complement activation. The encoded preproprotein undergoes post-translational processing to generate a mature polypeptide anchored to the plasma membrane via a glycosylphosphatidylinositol moiety. Erythrocytes from mice deficient in the encoded protein exhibit impaired regulation of complement activation resulting in enhanced complement deposition. Mice lacking the encoded protein exhibit enhanced susceptibility to experimentally induced myasthenia gravis. This gene is located adjacent to a closely related gene on chromosome 1.

Recommended Dilutions

FC 5 µl per 10⁶ cells in
 100 µl volume

Immunogen Information

Gene ID
13136

Swiss Prot
Q61475

Immunogen

Recombinant fusion protein containing a sequence corresponding to amino acids 35-361 of mouse CD55/DAF[NP_034146.2].

Synonyms

Daf; Daf1; Daf-GPI; GPI-DAF

Contact



www.abclonal.com

Product Information

Source
Rabbit

Isotype
IgG

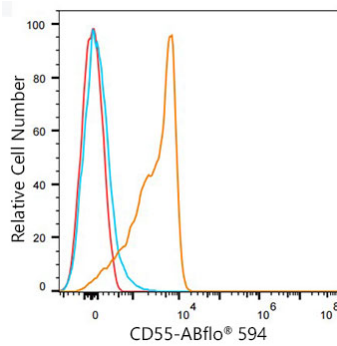
Purification
Affinity purification

Storage

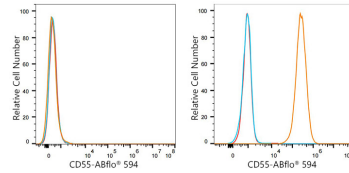
Store at 2-8°C. Avoid freeze.

Buffer: PBS with 0.03% proclin300, 0.2% BSA, pH7.3.

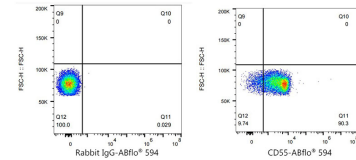
Validation Data



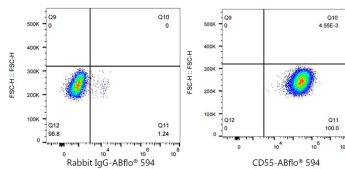
Flow cytometry: 1×10^6 C57BL/6 mouse Splenocytes were surface-stained with ABflo® 594 Rabbit anti-Human/Mouse CD55/DAF mAb(A23899,5 μ l/Test,orange line) or ABflo® 594 Rabbit IgG isotype control (A23821,5 μ l/Test,blue line).Non-fluorescently stained C57BL/6 mouse Splenocytes were used as blank control (red line).



Flow cytometry: 1×10^6 SH-SY5Y cells(negative control,left) and Hela cells(right) were surface-stained with ABflo® 594 Rabbit anti-Human/Mouse CD55/DAF mAb(A23899,5 μ l/Test,orange line) or ABflo® 594 Rabbit IgG isotype control (A23821,5 μ l/Test,blue line).Non-fluorescently stained cells were used as blank control (red line).



Flow cytometry: 1×10^6 C57BL/6 mouse Splenocytes were surface-stained with ABflo® 594 Rabbit IgG isotype control (A23821,5 μ l/Test,left) or ABflo® 594 Rabbit anti-Human/Mouse CD55/DAF mAb(A23899,5 μ l/Test,right).



Flow cytometry: 1×10^6 Hela cells were surface-stained with ABflo® 594 Rabbit IgG isotype control (A23821,5 μ l/Test,left) or ABflo® 594 Rabbit anti-Human/Mouse CD55/DAF mAb(A23899,5 μ l/Test,right).