

A23895

Leader in Biomolecular Solutions for Life Science



HSF1 Rabbit mAb

Catalog No.: A23895

Recombinant

Basic Information

Observed MW

75kDa

Calculated MW

57kDa

Category

SMab Recombinant Monoclonal Antibody

Applications

WB, IHC-P, IP, ELISA

Cross-Reactivity

Human, Mouse, Rat

CloneNo number

ARC61341

Background

The product of this gene is a transcription factor that is rapidly induced after temperature stress and binds heat shock promoter elements (HSE). This protein plays a role in the regulation of lifespan. Expression of this gene is repressed by phosphorylation, which promotes binding by heat shock protein 90.

Recommended Dilutions

WB 1:500 - 1:2000

IHC-P 1:50 - 1:200

IP 0.5µg-4µg antibody for
200µg-400µg extracts of
whole cells

Immunogen Information

Gene ID

3297

Swiss Prot

Q00613

Immunogen

A synthetic peptide corresponding to a sequence within amino acids 429-530 of human HSF1 (NP_005517.1).

Synonyms

HSTF1; HSF1

Contact



www.abclonal.com

Product Information

Source

Rabbit

Isotype

IgG

Purification

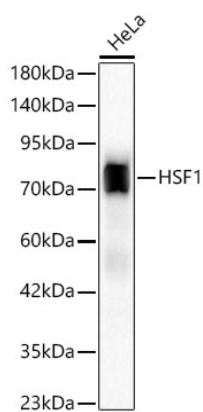
Affinity purification

Storage

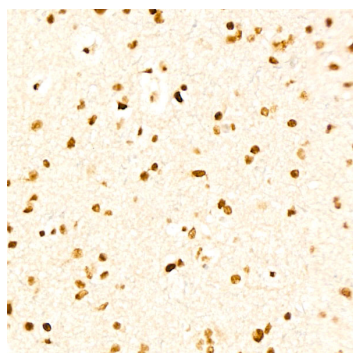
Store at -20°C. Avoid freeze / thaw cycles.

Buffer: PBS with 0.05% proclin300, 0.05% BSA, 50% glycerol, pH7.3.

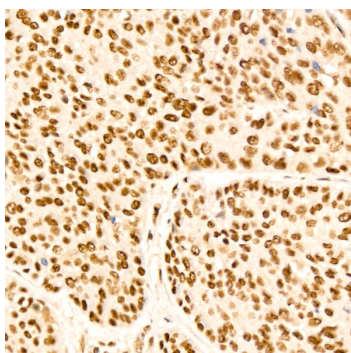
Validation Data



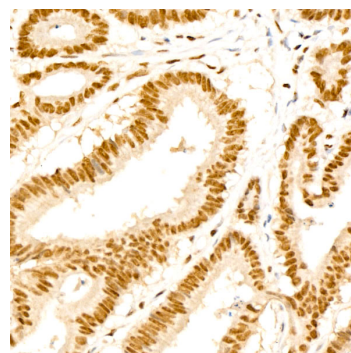
Western blot analysis of lysates from HeLa cells, using HSF1 Rabbit mAb (A23895) at 1:1000 dilution.
Secondary antibody: HRP Goat Anti-Rabbit IgG (H+L) (A5014) at 1:10000 dilution.
Blocking buffer: 3% nonfat dry milk in TBST.
Detection: ECL Basic Kit (RM00020).
Exposure time: 30s.



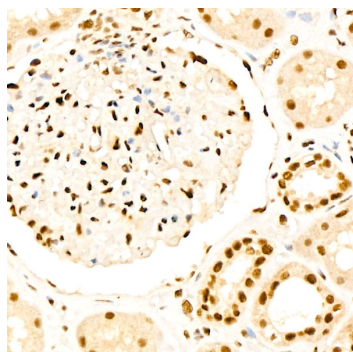
Immunohistochemistry analysis of HSF1 in paraffin-embedded human brain using HSF1 Rabbit mAb (A23895) at dilution of 1:300 (40x lens). Perform high pressure antigen retrieval with 10 mM citrate buffer pH 6.0 before commencing with IHC staining protocol.



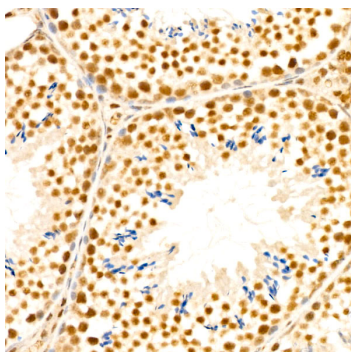
Immunohistochemistry analysis of HSF1 in paraffin-embedded human cervix cancer using HSF1 Rabbit mAb (A23895) at dilution of 1:300 (40x lens). Perform high pressure antigen retrieval with 10 mM citrate buffer pH 6.0 before commencing with IHC staining protocol.



Immunohistochemistry analysis of HSF1 in paraffin-embedded human colon carcinoma using HSF1 Rabbit mAb (A23895) at dilution of 1:300 (40x lens). Perform high pressure antigen retrieval with 10 mM citrate buffer pH 6.0 before commencing with IHC staining protocol.

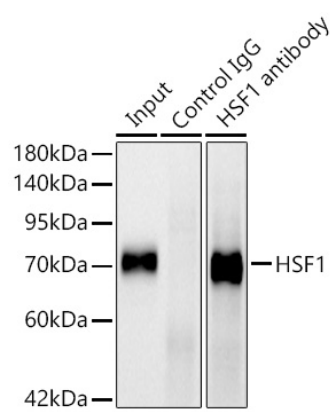


Immunohistochemistry analysis of HSF1 in paraffin-embedded human kidney using HSF1 Rabbit mAb (A23895) at dilution of 1:300 (40x lens). Perform high pressure antigen retrieval with 10 mM citrate buffer pH 6.0 before commencing with IHC staining protocol.



Immunohistochemistry analysis of HSF1 in paraffin-embedded mouse testis using HSF1 Rabbit mAb (A23895) at dilution of 1:300 (40x lens). Perform high pressure antigen retrieval with 10 mM citrate buffer pH 6.0 before commencing with IHC staining protocol.

Validation Data



Immunoprecipitation analysis of 300 µg extracts of HeLa cells using 3 µg HSF1 Rabbit mAb (A23895). Western blot was performed from the immunoprecipitate using HSF1 Rabbit mAb (A23895) at a dilution of 1:2000.