

A23848

Leader in Biomolecular Solutions for Life Science



## ABflo® 647 Rabbit anti-Human/Mouse BCL6 mAb

Catalog No.: A23848

### Basic Information

#### Observed MW

#### Calculated MW

72kDa/78kDa

#### Category

SMab Recombinant Monoclonal Antibody

#### Applications

FC (intra)

#### Cross-Reactivity

Human, Mouse

#### CloneNo number

ARC57886-ABflo647

#### Conjugate

ABflo® 647. Ex:648nm. Em:664nm.

### Background

The protein encoded by this gene is a zinc finger transcription factor and contains an N-terminal POZ domain. This protein acts as a sequence-specific repressor of transcription, and has been shown to modulate the transcription of STAT-dependent IL-4 responses of B cells. This protein can interact with a variety of POZ-containing proteins that function as transcription corepressors. This gene is found to be frequently translocated and hypermutated in diffuse large-cell lymphoma (DLCL), and may be involved in the pathogenesis of DLCL. Alternatively spliced transcript variants encoding different protein isoforms have been found for this gene.

### Recommended Dilutions

**FC (intra)**      5 µl per 10<sup>6</sup> cells in  
100 µl volume

### Immunogen Information

#### Gene ID

604

#### Swiss Prot

P41182

#### Immunogen

Recombinant fusion protein containing a sequence corresponding to amino acids 235-350 of human BCL6(NP\_001124317.1).

#### Synonyms

BCL6; BCL5; BCL6A; LAZ3; ZBTB27; ZNF51; B-cell CLL/lymphoma 6

### Contact



[www.abclonal.com](http://www.abclonal.com)

### Product Information

#### Source

Rabbit

#### Isotype

IgG

#### Purification

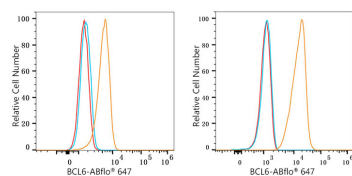
Affinity purification

#### Storage

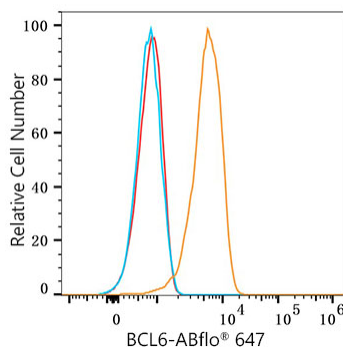
Store at 2-8°C. Avoid freeze.

Buffer: PBS with 0.03% proclin300, 0.2% BSA, pH7.3.

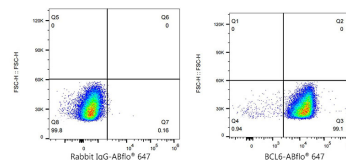
## Validation Data



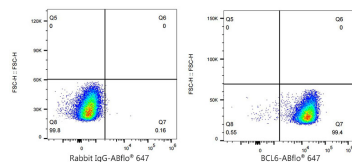
Flow cytometry:  $1 \times 10^6$  HAP1 cells (Low Expression, left) and Daudi cells (right) were intracellularly-stained with ABflo® 647 Rabbit anti-Human/Mouse BCL6 mAb (A23848, 5  $\mu$ l/Test, orange line) or ABflo® 647 Rabbit IgG isotype control (A22069, 5  $\mu$ l/Test, blue line). Non-fluorescently stained cells were used as blank control (red line).



Flow cytometry:  $1 \times 10^6$  A20 cells were intracellularly-stained with ABflo® 647 Rabbit anti-Human/Mouse BCL6 mAb (A23848, 5  $\mu$ l/Test, orange line) or ABflo® 647 Rabbit IgG isotype control (A22069, 5  $\mu$ l/Test, blue line). Non-fluorescently stained A20 cells were used as blank control (red line).



Flow cytometry:  $1 \times 10^6$  Daudi cells were intracellularly-stained with ABflo® 647 Rabbit IgG isotype control (A22069, 5  $\mu$ l/Test, left) or ABflo® 647 Rabbit anti-Human/Mouse BCL6 mAb.



Flow cytometry:  $1 \times 10^6$  A20 cells were intracellularly-stained with ABflo® 647 Rabbit IgG isotype control (A22069, 5  $\mu$ l/Test, left) or ABflo® 647 Rabbit anti-Human/Mouse BCL6 mAb.