

A23847

Leader in Biomolecular Solutions for Life Science



ABflo® 488 Rabbit anti-Human/Mouse BCL6 mAb

Catalog No.: A23847

Basic Information

Observed MW

Calculated MW

72kDa/78kDa

Category

SMab Recombinant Monoclonal Antibody

Applications

FC (intra)

Cross-Reactivity

Human, Mouse

CloneNo number

ARC57886-ABflo488

Conjugate

ABflo® 488. Ex:491nm. Em:516nm.

Background

The protein encoded by this gene is a zinc finger transcription factor and contains an N-terminal POZ domain. This protein acts as a sequence-specific repressor of transcription, and has been shown to modulate the transcription of STAT-dependent IL-4 responses of B cells. This protein can interact with a variety of POZ-containing proteins that function as transcription corepressors. This gene is found to be frequently translocated and hypermutated in diffuse large-cell lymphoma (DLCL), and may be involved in the pathogenesis of DLCL. Alternatively spliced transcript variants encoding different protein isoforms have been found for this gene.

Recommended Dilutions

FC (intra) 5 µl per 10⁶ cells in
100 µl volume

Immunogen Information

Gene ID

604

Swiss Prot

P41182

Immunogen

Recombinant fusion protein containing a sequence corresponding to amino acids 235-350 of human BCL6(NP_001124317.1).

Synonyms

BCL6; BCL5; BCL6A; LAZ3; ZBTB27; ZNF51; B-cell CLL/lymphoma 6

Contact



www.abclonal.com

Product Information

Source

Rabbit

Isotype

IgG

Purification

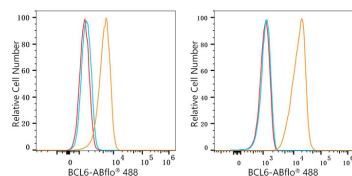
Affinity purification

Storage

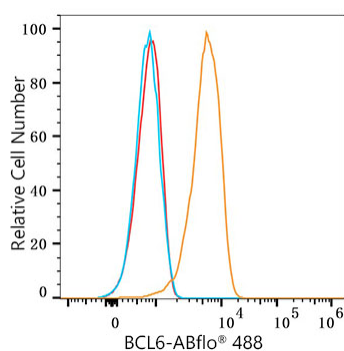
Store at 2-8°C. Avoid freeze.

Buffer: PBS with 0.03% proclin300, 0.2% BSA, pH7.3.

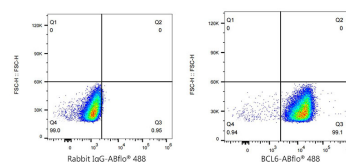
Validation Data



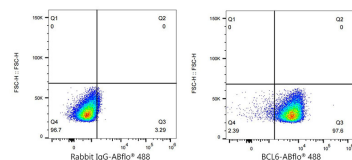
Flow cytometry: 1×10^6 HAP1 cells (Low Expression, left) and Daudi cells (right) were intracellularly-stained with ABflo® 488 Rabbit anti-Human/Mouse BCL6 mAb (A23847) $5 \mu\text{l}/\text{Test}$, orange line) or ABflo® 488 Rabbit IgG isotype control (A22069, $5 \mu\text{l}/\text{Test}$, blue line). Non-fluorescently stained cells were used as blank control (red line).



Flow cytometry: 1×10^6 A20 cells were intracellularly-stained with ABflo® 488 Rabbit anti-Human/Mouse BCL6 mAb (A23847) $5 \mu\text{l}/\text{Test}$, orange line) or ABflo® 488 Rabbit IgG isotype control (A22069, $5 \mu\text{l}/\text{Test}$, blue line). Non-fluorescently stained A20 cells were used as blank control (red line).



Flow cytometry: 1×10^6 Daudi cells were intracellularly-stained with ABflo® 488 Rabbit IgG isotype control (A22069, $5 \mu\text{l}/\text{Test}$, left) or ABflo® 488 Rabbit anti-Human/Mouse BCL6 mAb.



Flow cytometry: 1×10^6 A20 cells were intracellularly-stained with ABflo® 488 Rabbit IgG isotype control (A22069, $5 \mu\text{l}/\text{Test}$, left) or ABflo® 488 Rabbit anti-Human/Mouse BCL6 mAb.