

A23840

Leader in Biomolecular Solutions for Life Science



ADAMTS1 Rabbit mAb

Catalog No.: A23840

Recombinant

Basic Information

Observed MW

Refer to figures

Calculated MW

105kDa

Category

SMab Recombinant Monoclonal Antibody

Applications

IF/ICC,ELISA

Cross-Reactivity

Human,Mouse,Rat

CloneNo number

ARC61847

Background

This gene encodes a member of the ADAMTS (a disintegrin and metalloproteinase with thrombospondin motif) protein family. Members of the family share several distinct protein modules, including a propeptide region, a metalloproteinase domain, a disintegrin-like domain, and a thrombospondin type 1 (TS) motif. Individual members of this family differ in the number of C-terminal TS motifs, and some have unique C-terminal domains. The protein encoded by this gene contains two disintegrin loops and three C-terminal TS motifs and has anti-angiogenic activity. The expression of this gene may be associated with various inflammatory processes as well as development of cancer cachexia. This gene is likely to be necessary for normal growth, fertility, and organ morphology and function.

Recommended Dilutions

IF/ICC 1:50 - 1:200

Immunogen Information

Gene ID

9510

Swiss Prot

Q9UHI8

Immunogen

Recombinant fusion protein containing a sequen cecorresponding to amino acids 50-174 of human ADAMTS1(NP_008919.3).

Synonyms

ADAMTS1; C3-C5; METH1; ADAM metalloproteinase with thrombospondin type 1 motif 1

Contact



www.abclonal.com

Product Information

Source

Rabbit

Isotype

IgG

Purification

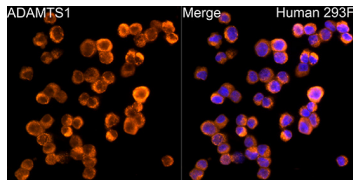
Affinity purification

Storage

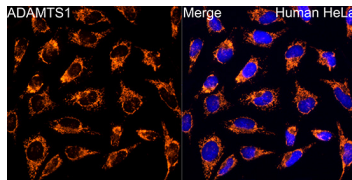
Store at -20°C. Avoid freeze / thaw cycles.

Buffer: PBS with 0.05% proclin300,0.05% BSA,50% glycerol,pH7.3.

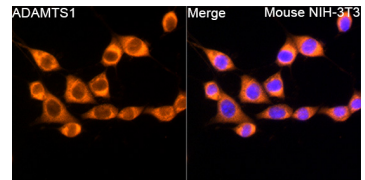
Validation Data



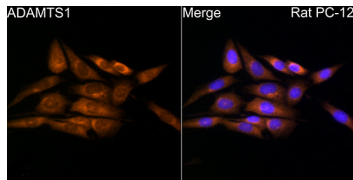
Immunofluorescence analysis of 293F cells using ADAMTS1 Rabbit mAb (A23840) at a dilution of 1:200 (40x lens). Secondary antibody: Cy3 Goat Anti-Rabbit IgG (H+L) (AS007) at 1:500 dilution. Blue: DAPI for nuclear staining.



Immunofluorescence analysis of HeLa cells using ADAMTS1 Rabbit mAb (A23840) at a dilution of 1:200 (40x lens). Secondary antibody: Cy3 Goat Anti-Rabbit IgG (H+L) (AS007) at 1:500 dilution. Blue: DAPI for nuclear staining.



Immunofluorescence analysis of NIH/3T3 cells using ADAMTS1 Rabbit mAb (A23840) at a dilution of 1:200 (40x lens). Secondary antibody: Cy3 Goat Anti-Rabbit IgG (H+L) (AS007) at 1:500 dilution. Blue: DAPI for nuclear staining.



Immunofluorescence analysis of PC-12 cells using ADAMTS1 Rabbit mAb (A23840) at a dilution of 1:200 (40x lens). Secondary antibody: Cy3 Goat Anti-Rabbit IgG (H+L) (AS007) at 1:500 dilution. Blue: DAPI for nuclear staining.