

A23815

Leader in Biomolecular Solutions for Life Science



ABflo® 594 Rabbit anti-Mouse ICOS/CD278 mAb

Catalog No.: A23815

Basic Information

Observed MW

Calculated MW
22KDa

Category

SMab Recombinant Monoclonal Antibody

Applications

FC

Cross-Reactivity

Mouse

CloneNo number

ARC62052-ABflo594

Conjugate

ABflo® 594. Ex:588nm. Em:604nm.

Background

Predicted to be involved in T cell costimulation; T cell tolerance induction; and cell-cell adhesion. Located in external side of plasma membrane. Is integral component of plasma membrane. Used to study common variable immunodeficiency. Human ortholog(s) of this gene implicated in celiac disease; common variable immunodeficiency; and immunoglobulin alpha deficiency. Orthologous to human ICOS (inducible T cell costimulator).

Recommended Dilutions

FC 5 µl per 10⁶ cells in
100 µl volume

Immunogen Information

Gene ID
54167

Swiss Prot
Q9WVS0

Immunogen

Recombinant protein of mouse ICOS/CD278.

Synonyms

H4; CCLP; AILIM; CRP-1; Ly115

Contact



www.abclonal.com

Product Information

Source
Rabbit

Isotype
IgG

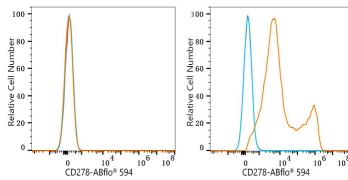
Purification
Affinity purification

Storage

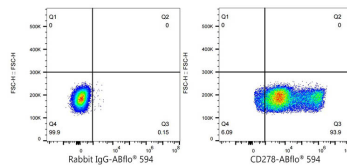
Store at 2-8°C. Avoid freeze.

Buffer: PBS with 0.03% proclin300,0.2% BSA,pH7.3.

Validation Data



Flow cytometry: 1X10⁶ CHO cells(negative control,left) and CHO(Transfection,right) cells were surface-stained with ABflo® 594 Rabbit anti-Mouse ICOS/CD278 mAb(A23815,5 µl/Test,orange line) or ABflo® 594 Rabbit IgG isotype control (5 µl/Test,blue line).Non-fluorescently stained cells were used as blank control (red line).



Flow cytometry:1X10⁶ CHO(Transfection) cells were surface-stained with ABflo® 594 Rabbit IgG isotype control (5 µl/Test,left) or ABflo® 594 Rabbit anti-Mouse ICOS/CD278 mAb(A23815,5 µl/Test,right).