

A23813

Leader in Biomolecular Solutions for Life Science



## ABflo® 488 Rabbit anti-Mouse ICOS/CD278 mAb

Catalog No.: A23813

### Basic Information

#### Observed MW

**Calculated MW**  
22KDa

#### Category

SMab Recombinant Monoclonal Antibody

#### Applications

FC

#### Cross-Reactivity

Mouse

#### CloneNo number

ARC62052-ABflo488

#### Conjugate

ABflo® 488. Ex:491nm. Em:516nm.

### Background

Predicted to be involved in T cell costimulation; T cell tolerance induction; and cell-cell adhesion. Located in external side of plasma membrane. Is integral component of plasma membrane. Used to study common variable immunodeficiency. Human ortholog(s) of this gene implicated in celiac disease; common variable immunodeficiency; and immunoglobulin alpha deficiency. Orthologous to human ICOS (inducible T cell costimulator).

### Recommended Dilutions

**FC** 5 µl per 10<sup>6</sup> cells in  
100 µl volume

### Immunogen Information

**Gene ID**  
54167

**Swiss Prot**  
Q9WVS0

#### Immunogen

Recombinant protein of mouse ICOS/CD278.

#### Synonyms

H4; CCLP; AILIM; CRP-1; Ly115

### Contact



[www.abclonal.com](http://www.abclonal.com)

### Product Information

**Source**  
Rabbit

**Isotype**  
IgG

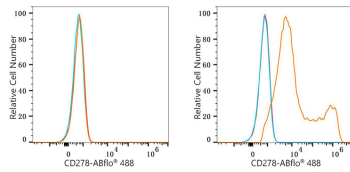
**Purification**  
Affinity purification

#### Storage

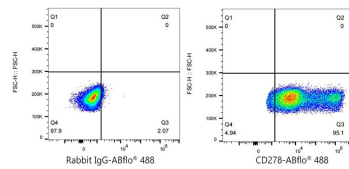
Store at 2-8°C. Avoid freeze.

Buffer: PBS with 0.03% proclin300,0.2% BSA,pH7.3.

## Validation Data



Flow cytometry:  $1 \times 10^6$  CHO cells (negative control, left) and CHO (Transfection, right) cells were surface-stained with ABflo® 488 Rabbit anti-Mouse ICOS/CD278 mAb (A23813, 5  $\mu$ l/Test, orange line) or ABflo® 488 Rabbit IgG isotype control (A22069, 5  $\mu$ l/Test, blue line). Non-fluorescently stained cells were used as blank control (red line).



Flow cytometry:  $1 \times 10^6$  CHO (Transfection) cells were surface-stained with ABflo® 488 Rabbit IgG isotype control (A22069, 5  $\mu$ l/Test, left) or ABflo® 488 Rabbit anti-Mouse ICOS/CD278 mAb (A23813, 5  $\mu$ l/Test, right).