

A23800

Leader in Biomolecular Solutions for Life Science



## ABflo® 594 Rabbit anti-Human CD352/SLAMF6 mAb

Catalog No.: A23800

### Basic Information

#### Observed MW

#### Calculated MW

24kDa/37kDa

#### Category

SMab Recombinant Monoclonal Antibody

#### Applications

FC

#### Cross-Reactivity

Human

#### CloneNo number

ARC60903-ABflo594

#### Conjugate

ABflo® 594. Ex:588nm. Em:604nm.

### Background

The protein encoded by this gene is a type I transmembrane protein, belonging to the CD2 subfamily of the immunoglobulin superfamily. This encoded protein is expressed on Natural killer (NK), T, and B lymphocytes. It undergoes tyrosine phosphorylation and associates with the Src homology 2 domain-containing protein (SH2D1A) as well as with SH2 domain-containing phosphatases (SHPs). It functions as a coreceptor in the process of NK cell activation. It can also mediate inhibitory signals in NK cells from X-linked lymphoproliferative patients. Alternative splicing results in multiple transcript variants encoding distinct isoforms.

### Recommended Dilutions

FC 5 µl per 10<sup>6</sup> cells in  
100 µl volume

### Immunogen Information

#### Gene ID

114836

#### Swiss Prot

Q96DU3

#### Immunogen

Recombinant protein of human CD352/SLAMF6.

#### Synonyms

SLAMF6; CD352; KALI; KALIB; Ly108; NTB-A; NTBA; SF2000; SLAM family member 6

### Contact



[www.abclonal.com](http://www.abclonal.com)

### Product Information

#### Source

Rabbit

#### Isotype

IgG

#### Purification

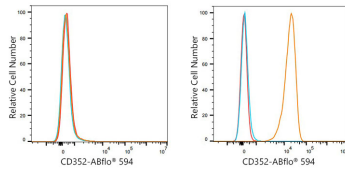
Affinity purification

#### Storage

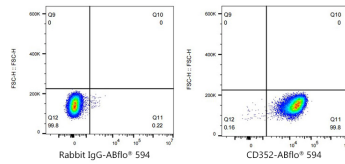
Store at 2-8°C. Avoid freeze.

Buffer: PBS with 0.03% proclin300, 0.2% BSA, pH7.3.

## Validation Data



Flow cytometry:  $1 \times 10^6$  HAP1 cells (negative control, left) and Daudi cells (right) were surface-stained with ABflo® 594 Rabbit anti-Human CD352/SLAMF6 mAb (A23800, 5  $\mu$ l/Test, orange line) or ABflo® 594 Rabbit IgG isotype control (5  $\mu$ l/Test, blue line). Non-fluorescently stained cells were used as blank control (red line).



Flow cytometry:  $1 \times 10^6$  Daudi cells were surface-stained with ABflo® 594 Rabbit IgG isotype control (5  $\mu$ l/Test, left) or ABflo® 594 Rabbit anti-Human CD352/SLAMF6 mAb (A23800, 5  $\mu$ l/Test, right).