

A23799

Leader in Biomolecular Solutions for Life Science



ABflo® 647 Rabbit anti-Human CD352/SLAMF6 mAb

Catalog No.: A23799

Basic Information

Observed MW

Calculated MW

24kDa/37kDa

Category

SMab Recombinant Monoclonal Antibody

Applications

FC

Cross-Reactivity

Human

CloneNo number

ARC60903-ABflo647

Conjugate

ABflo® 647. Ex:648nm. Em:664nm.

Background

The protein encoded by this gene is a type I transmembrane protein, belonging to the CD2 subfamily of the immunoglobulin superfamily. This encoded protein is expressed on Natural killer (NK), T, and B lymphocytes. It undergoes tyrosine phosphorylation and associates with the Src homology 2 domain-containing protein (SH2D1A) as well as with SH2 domain-containing phosphatases (SHPs). It functions as a coreceptor in the process of NK cell activation. It can also mediate inhibitory signals in NK cells from X-linked lymphoproliferative patients. Alternative splicing results in multiple transcript variants encoding distinct isoforms.

Recommended Dilutions

FC 5 µl per 10⁶ cells in
100 µl volume

Immunogen Information

Gene ID

114836

Swiss Prot

Q96DU3

Immunogen

Recombinant protein of human CD352/SLAMF6.

Synonyms

SLAMF6; CD352; KALI; KALIB; Ly108; NTB-A; NTBA; SF2000; SLAM family member 6

Contact



www.abclonal.com

Product Information

Source

Rabbit

Isotype

IgG

Purification

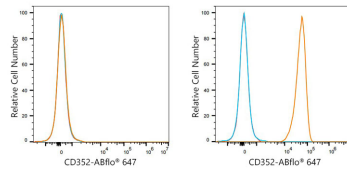
Affinity purification

Storage

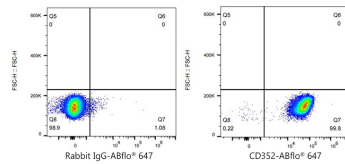
Store at 2-8°C. Avoid freeze.

Buffer: PBS with 0.03% proclin300, 0.2% BSA, pH7.3.

Validation Data



Flow cytometry: 1X10⁶ HAP1 cells(negative control,left) and Daudi cells (right) were surface-stained with ABflo® 647 Rabbit anti-Human CD352/SLAMF6 mAb(A23799,5 µl/Test,orange line) or ABflo® 647 Rabbit IgG isotype control (A22070,5 µl/Test,blue line).Non-fluorescently stained cells were used as blank control (red line).



Flow cytometry:1X10⁶ Daudi cells were surface-stained with ABflo® 647 Rabbit IgG isotype control (A22070,5 µl/Test,left) or ABflo® 647 Rabbit anti-Human CD352/SLAMF6 mAb(A23799,5 µl/Test,right).