

Asymmetric DiMethyl-Histone H4-R3 pAb

Catalog No.	A2376	Category	Methylated Antibodies
Applications	WB, IHC, IF, IP	Observed MW	13kDa
Cross-reactivity	Human, Mouse, Rat, Other (Wide Range)	Calculated MW	11kDa

Immunogen Information

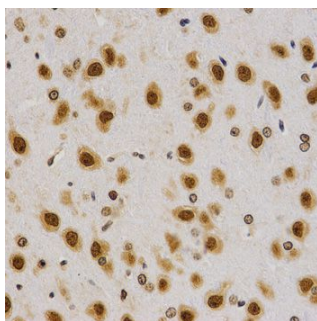
Immunogen	A synthetic methylated peptide corresponding to residues surrounding Arg3 of human histone H4
Gene ID	8370
Swiss prot	P62805
Synonyms	FO108;H4;H4/n;H4F2;H4FN;HIST2H4

Product information

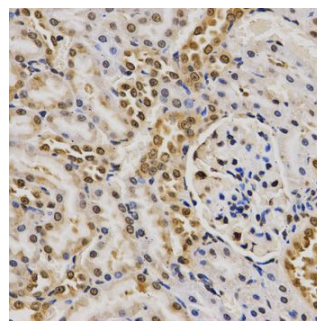
Source	Rabbit
Isotype	IgG
Purification method	Affinity purification
Storage	Store at -20°C. Avoid freeze / thaw cycles. Buffer: PBS with 0.02% sodium azide, 50% glycerol, pH7.3.

Background

Histones are basic nuclear proteins that are responsible for the nucleosome structure of the chromosomal fiber in eukaryotes. This structure consists of approximately 146 bp of DNA wrapped around a nucleosome, an octamer composed of pairs of each of the four core histones (H2A, H2B, H3, and H4). The chromatin fiber is further compacted through the interaction of a linker histone, H1, with the DNA between the nucleosomes to form higher order chromatin structures. This gene is intronless and encodes a replication-dependent histone that is a member of the histone H4 family. Transcripts from this gene lack polyA tails; instead, they contain a palindromic termination element. This gene is found in a histone cluster on chromosome 1. This gene is one of four histone genes in the cluster that are duplicated; this record represents the centromeric copy.



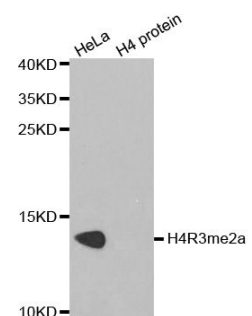
Immunohistochemistry of paraffin-embedded rat brain using Asymmetric DiMethyl-Histone H4-R3 antibody (A2376) at dilution of 1:200 (40x lens).



Immunohistochemistry of paraffin-embedded rat kidney using Asymmetric DiMethyl-Histone H4-R3 antibody (A2376) at dilution of 1:200 (40x lens).

Recommended Dilutions

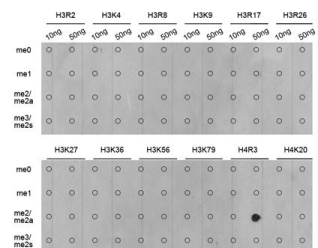
WB	1:500 - 1:2000
IHC	1:50 - 1:200
IF	1:50 - 1:200
IP	1:50 - 1:100



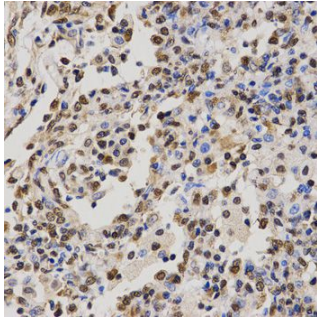
Western blot analysis of extracts of various cell lines, using Asymmetric DiMethyl-Histone H4-R3 antibody (A2376).

Secondary antibody: HRP Goat Anti-Rabbit IgG (H+L) (AS014) at 1:10000 dilution.

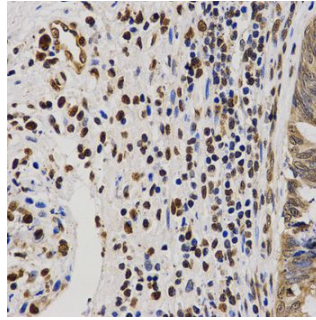
Lysates/proteins: 25ug per lane.
Blocking buffer: 3% nonfat dry milk in TBST.



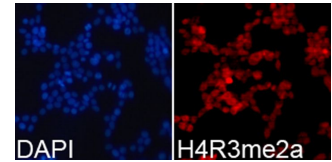
Dot-blot analysis of all sorts of methylation peptides using Asymmetric DiMethyl-Histone H4-R3 antibody (A2376).



Immunohistochemistry of paraffin-embedded human lung cancer using Asymmetric DiMethyl-Histone H4-R3 antibody (A2376) at dilution of 1:200 (40x lens).



Immunohistochemistry of paraffin-embedded human rectal cancer using Asymmetric DiMethyl-Histone H4-R3 antibody (A2376) at dilution of 1:200 (40x lens).



Immunofluorescence analysis of 293T cells using Asymmetric DiMethyl-Histone H4-R3 antibody (A2376). Blue: DAPI for nuclear staining.