

A23746

Leader in Biomolecular Solutions for Life Science



ABflo® 594 Rabbit anti-Human CD239/BCAM mAb

Catalog No.: A23746

Basic Information

Observed MW

Calculated MW
67kDa

Category

SMab Recombinant Monoclonal Antibody

Applications

FC

Cross-Reactivity

Human

CloneNo number

ARC61168-ABf594

Conjugate

ABflo® 594. Ex:588nm. Em:604nm.

Background

This gene encodes Lutheran blood group glycoprotein, a member of the immunoglobulin superfamily and a receptor for the extracellular matrix protein, laminin. The protein contains five extracellular immunoglobulin domains, a single transmembrane domain, and a short C-terminal cytoplasmic tail. This protein may play a role in epithelial cell cancer and in vaso-occlusion of red blood cells in sickle cell disease. Polymorphisms in this gene define some of the antigens in the Lutheran system and also the Auberger system. Inactivating variants of this gene result in the recessive Lutheran null phenotype, Lu(a-b-), of the Lutheran blood group. Two transcript variants encoding different isoforms have been found for this gene.

Recommended Dilutions

FC 5 µl per 10⁶ cells in
100 µl volume

Immunogen Information

Gene ID
4059

Swiss Prot
P50895

Immunogen

Recombinant fusion protein containing a sequence corresponding to amino acids 32-547 of human CD239/BCAM (NP_005572.2).

Synonyms

BCAM

Contact



www.abclonal.com

Product Information

Source
Rabbit

Isotype
IgG

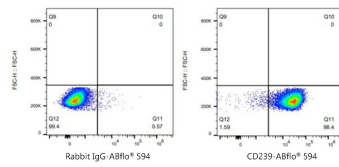
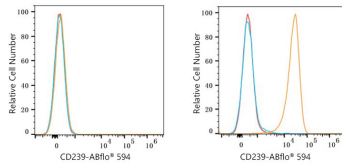
Purification
Affinity purification

Storage

Store at 2-8°C. Avoid freeze.

Buffer: PBS with 0.03% proclin300, 0.2% BSA, pH7.3.

Validation Data



Flow cytometry: 1X10⁶ SH-SY5Y cells (Low Expression, left) and SK-BR-3 cells (right) were surface-stained with ABflo® 594 Rabbit anti-Human CD239/BCAM mAb(A23746, 5 µl/Test, orange line) or ABflo® 594 Rabbit IgG isotype control (5 µl/Test, blue line). Non-fluorescently stained cells were used as blank control (red line).

Flow cytometry: 1X10⁶ SK-BR-3 cells were surface-stained with ABflo® 594 Rabbit IgG isotype control (5 µl/Test, left) or ABflo® 594 Rabbit anti-Human CD239/BCAM mAb(A23746, 5 µl/Test, right).