

A2374

Leader in Biomolecular Solutions for Life Science



# Symmetric DiMethyl-Histone H3-R8 Rabbit pAb

Catalog No.: A2374

4 Publications

## Basic Information

### Observed MW

17kDa

### Calculated MW

16kDa

### Category

Mouse Monoclonal Antibody

### Applications

WB, IHC-P, IF/ICC, ChIP-seq, ELISA

### Cross-Reactivity

Human, Mouse, Rat, Other (Wide Range Predicted)

## Background

Histones are basic nuclear proteins that are responsible for the nucleosome structure of the chromosomal fiber in eukaryotes. Nucleosomes consist of approximately 146 bp of DNA wrapped around a histone octamer composed of pairs of each of the four core histones (H2A, H2B, H3, and H4). The chromatin fiber is further compacted through the interaction of a linker histone, H1, with the DNA between the nucleosomes to form higher order chromatin structures. This gene is intronless and encodes a replication-dependent histone that is a member of the histone H3 family. Transcripts from this gene lack polyA tails; instead, they contain a palindromic termination element. This gene is located separately from the other H3 genes that are in the histone gene cluster on chromosome 6p22-p21.3.

## Recommended Dilutions

WB	1:100 - 1:500
IHC-P	1:50 - 1:200
IF/ICC	1:50 - 1:200
ChIP-seq	1:20 - 1:50

## Immunogen Information

### Gene ID

8290/8350

### Swiss Prot

Q16695/P68431

### Immunogen

A synthetic symmetric dimethylated peptide around R8 of human histone H3 (NP\_003520.1).

### Synonyms

H3t; H3.4; H3/g; H3FT; H3C16; HIST3H3; Symmetric DiMethyl-Histone H3-R8

## Contact

[www.abclonal.com](http://www.abclonal.com)

## Product Information

### Source

Rabbit

### Isotype

IgG

### Purification

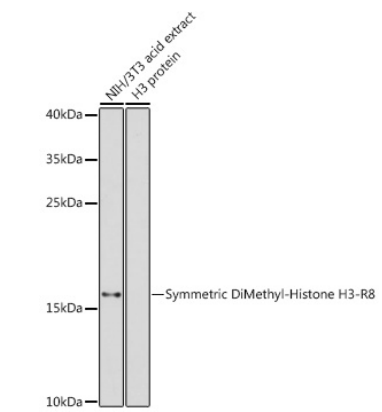
Affinity purification

### Storage

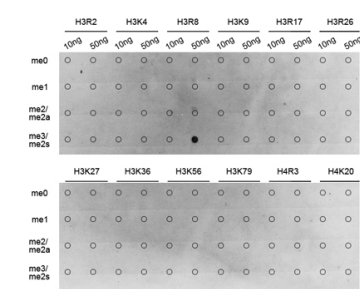
Store at -20°C. Avoid freeze / thaw cycles.

Buffer: PBS with 0.02% sodium azide, 50% glycerol, pH 7.3.

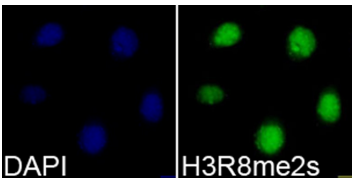
Validation Data



Western blot analysis of lysates from NIH/3T3 cells, using Symmetric DiMethyl-Histone H3-R8 Rabbit pAb (A2374) at 1:500 dilution.  
Secondary antibody: HRP Goat Anti-Rabbit IgG (H+L) (AS014) at 1:10000 dilution.  
Lysates/proteins: 25µg per lane.  
Blocking buffer: 3% nonfat dry milk in TBST.  
Detection: ECL Enhanced Kit (RM00021).  
Exposure time: 180s.



Dot-blot analysis of all sorts of methylation peptides using Symmetric DiMethyl-Histone H3-R8 antibody (A2374).



Immunofluorescence analysis of 293T cells using Symmetric DiMethyl-Histone H3-R8 Rabbit pAb (A2374). Blue: DAPI for nuclear staining.