

A23732

Leader in Biomolecular Solutions for Life Science



## ABflo® 488 Rabbit anti-Human MMP9 mAb

Catalog No.: A23732

### Basic Information

#### Observed MW

#### Calculated MW

78kDa

#### Category

SMab Recombinant Monoclonal Antibody

#### Applications

FC (intra)

#### Cross-Reactivity

Human

#### CloneNo number

ARC60377-ABf488

#### Conjugate

ABflo® 488. Ex:491nm. Em:516nm.

### Background

Proteins of the matrix metalloproteinase (MMP) family are involved in the breakdown of extracellular matrix in normal physiological processes, such as embryonic development, reproduction, and tissue remodeling, as well as in disease processes, such as arthritis and metastasis. Most MMP's are secreted as inactive proproteins which are activated when cleaved by extracellular proteinases. The enzyme encoded by this gene degrades type IV and V collagens. Studies in rhesus monkeys suggest that the enzyme is involved in IL-8-induced mobilization of hematopoietic progenitor cells from bone marrow, and murine studies suggest a role in tumor-associated tissue remodeling.

### Recommended Dilutions

**FC (intra)**      5 µl per 10<sup>6</sup> cells in  
100 µl volume

### Immunogen Information

#### Gene ID

4318

#### Swiss Prot

P14780

#### Immunogen

Recombinant fusion protein containing a sequence corresponding to amino acids 20-707 of human MMP9 (NP\_004985.2).

#### Synonyms

MMP9; CLG4B; GELB; MANDP2; MMP-9; matrix metalloproteinase 9

### Contact



[www.abclonal.com](http://www.abclonal.com)

### Product Information

#### Source

Rabbit

#### Isotype

IgG

#### Purification

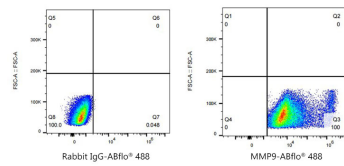
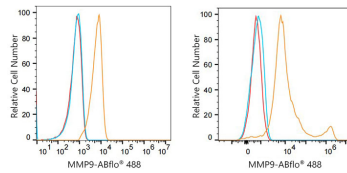
Affinity purification

#### Storage

Store at 2-8°C. Avoid freeze.

Buffer: PBS with 0.03% proclin300, 0.2% BSA, pH7.3.

## Validation Data



Flow cytometry:  $1 \times 10^6$  293T cells (Low Expression, left) and 293T (Transfection, right) cells were intracellularly-stained with ABflo® 488 Rabbit anti-Human MMP9 mAb (A23732, 5 µl/Test, orange line) or ABflo® 488 Rabbit IgG isotype control (A22069, 5 µl/Test, blue line). Non-fluorescently stained cells were used as blank control (red line).

Flow cytometry:  $1 \times 10^6$  293T (Transfection) cells were intracellularly-stained with ABflo® 488 Rabbit IgG isotype control (A22069, 5 µl/Test, left) or ABflo® 488 Rabbit anti-Human MMP9 mAb (A23732, 5 µl/Test, right).