

A23713

Leader in Biomolecular Solutions for Life Science



PE Rabbit anti-Human CD152/CTLA-4 mAb

Catalog No.: A23713

Basic Information

Observed MW

Calculated MW

6kDa/8kDa/19kDa/24kDa

Category

SMab Recombinant Monoclonal Antibody

Applications

FC

Cross-Reactivity

Human

CloneNo number

ARC57384-PE

Conjugate

PE. Ex:565nm. Em:574nm.

Background

This gene is a member of the immunoglobulin superfamily and encodes a protein which transmits an inhibitory signal to T cells. The protein contains a V domain, a transmembrane domain, and a cytoplasmic tail. Alternate transcriptional splice variants, encoding different isoforms, have been characterized. The membrane-bound isoform functions as a homodimer interconnected by a disulfide bond, while the soluble isoform functions as a monomer. Mutations in this gene have been associated with insulin-dependent diabetes mellitus, Graves disease, Hashimoto thyroiditis, celiac disease, systemic lupus erythematosus, thyroid-associated orbitopathy, and other autoimmune diseases.

Recommended Dilutions

FC 5 μ l per 10^6 cells in
100 μ l volume

Immunogen Information

Gene ID

1493

Swiss Prot

P16410

Immunogen

Recombinant fusion protein containing a sequence corresponding to amino acids 37-162 of human CD152/CTLA-4 (NP_005205.2)

Synonyms

CD; GSE; GRD4; ALPS5; CD152; CTLA-4; IDDM12; CELIAC3

Contact



www.abclonal.com

Product Information

Source

Rabbit

Isotype

IgG

Purification

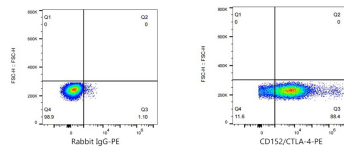
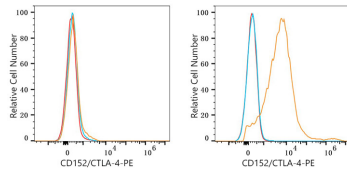
Affinity purification

Storage

Store at 2-8°C. Avoid freeze.

Buffer: PBS with 0.03% proclin300, 0.2% BSA, pH7.3.

Validation Data



Flow cytometry: 1×10^6 293F cells(negative control,left) and 293F(Transfection,right) cells were surface-stained with PE Rabbit anti-Human CD152/CTLA-4 mAb(A23713,5 µl/Test,orange line) or PE Rabbit IgG isotype control (5 µl/Test,blue line).Non-fluorescently stained cells was used as blank control (red line).

Flow cytometry: 1×10^6 293F(Transfection) cells were surface-stained with PE Rabbit IgG isotype control (5 µl/Test,left) or PE Rabbit anti-Human CD152/CTLA-4 mAb(A23713,5 µl/Test,right).