

A23706

Leader in Biomolecular Solutions for Life Science



## ABflo® 594 Rabbit anti-Mouse CD2 mAb

Catalog No.: A23706

### Basic Information

#### Observed MW

#### Calculated MW

38kDa

#### Category

SMab Recombinant Monoclonal Antibody

#### Applications

FC

#### Cross-Reactivity

Mouse

#### CloneNo number

ARC60614-ABf594

#### Conjugate

ABflo® 594. Ex:588nm. Em:604nm.

### Background

Enables identical protein binding activity. Predicted to be involved in T cell activation; heterotypic cell-cell adhesion; and positive regulation of cytokine production. Located in several cellular components, including cell-cell junction; cytoplasmic side of plasma membrane; and external side of plasma membrane. Is anchored component of plasma membrane. Is expressed in several structures, including alimentary system; central nervous system; genitourinary system; hemolymphoid system gland; and liver and biliary system. Orthologous to human CD2 (CD2 molecule).

### Recommended Dilutions

FC 5 µl per 10<sup>6</sup> cells in  
100 µl volume

### Immunogen Information

#### Gene ID

12481

#### Swiss Prot

P08920

#### Immunogen

Recombinant fusion protein containing a sequence corresponding to amino acids 23-203 of mouse CD2 (NP\_038514.1).

#### Synonyms

Ly37; LFA-2; Ly-37

### Contact



[www.abclonal.com](http://www.abclonal.com)

### Product Information

#### Source

Rabbit

#### Isotype

IgG

#### Purification

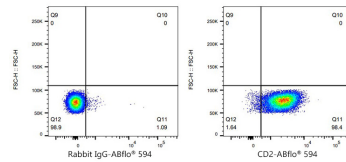
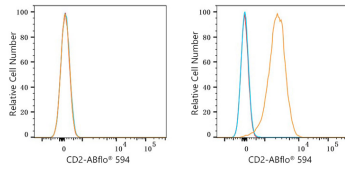
Affinity purification

#### Storage

Store at 2-8°C. Avoid freeze.

Buffer: PBS with 0.03% proclin300,0.2% BSA,pH7.3.

## Validation Data



Flow cytometry:  $1 \times 10^6$  4T1 cells (negative control, left) and C57BL/6 mouse Splenocytes (right) were surface-stained with ABflo® 594 Rabbit anti-Mouse CD2 mAb (A23706, 5  $\mu$ l/Test, orange line) or ABflo® 594 Rabbit IgG isotype control (A23821, 5  $\mu$ l/Test, blue line). Non-fluorescently stained cells were used as blank control (red line).

Flow cytometry:  $1 \times 10^6$  C57BL/6 mouse Splenocytes were surface-stained with ABflo® 594 Rabbit IgG isotype control (5  $\mu$ l/Test, left) or ABflo® 594 Rabbit anti-Mouse CD2 mAb (A23706, 5  $\mu$ l/Test, right).