

A23702

Leader in Biomolecular Solutions for Life Science



## ABflo® 647 Rabbit anti-Mouse CD31 mAb

Catalog No.: A23702

### Basic Information

#### Observed MW

Refer to figures

#### Calculated MW

69kDa/77kDa/80kDa/81kDa

#### Category

SMab Recombinant Monoclonal Antibody

#### Applications

FC

#### Cross-Reactivity

Mouse

#### CloneNo number

ARC61018-ABf647

#### Conjugate

ABflo® 647. Ex:648nm. Em:664nm.

### Background

Predicted to enable protein homodimerization activity; protein phosphatase binding activity; and transmembrane signaling receptor activity. Acts upstream of or within several processes, including Rho protein signal transduction; endothelial cell morphogenesis; and positive regulation of tyrosine phosphorylation of STAT protein. Located in several cellular components, including cell-cell contact zone; external side of plasma membrane; and smooth muscle contractile fiber. Is expressed in several structures, including alimentary system; cardiovascular system; central nervous system; extraembryonic component; and genitourinary system. Human ortholog(s) of this gene implicated in coronary artery disease (multiple); lung non-small cell carcinoma; neuroblastoma; and psoriatic arthritis. Orthologous to human PECAM1 (platelet and endothelial cell adhesion molecule 1).

### Recommended Dilutions

FC 5 µl per 10<sup>6</sup> cells in  
100 µl volume

### Immunogen Information

#### Gene ID

18613

#### Swiss Prot

Q08481

#### Immunogen

Recombinant fusion protein containing a sequence corresponding to amino acids 18-220 of mouse CD31 (NP\_001292086.1).

#### Synonyms

Cd31; Pecam; PECAM-1

### Contact



[www.abclonal.com](http://www.abclonal.com)

### Product Information

#### Source

Rabbit

#### Isotype

IgG

#### Purification

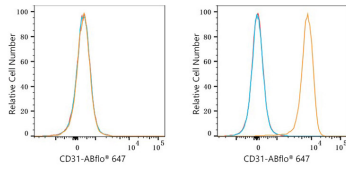
Affinity purification

#### Storage

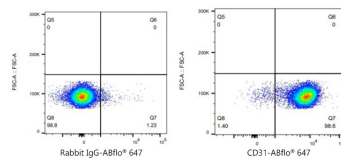
Store at 2-8°C. Avoid freeze.

Buffer: PBS with 0.03% proclin300,0.2% BSA,pH7.3.

## Validation Data



Flow cytometry:  $1 \times 10^6$  NIH/3T3 cells (negative control, left) and C57BL/6 mouse Splenocytes (right) were surface-stained with ABflo® 647 Rabbit anti-Mouse CD31 mAb (A23702, 5  $\mu$ l/Test, orange line) or ABflo® 647 Rabbit IgG isotype control (A22070, 5  $\mu$ l/Test, blue line). Non-fluorescently stained cells were used as blank control (red line).



Flow cytometry:  $1 \times 10^6$  C57BL/6 mouse Splenocytes cells were surface-stained with ABflo® 647 Rabbit IgG isotype control (A22070, 5  $\mu$ l/Test, left) or ABflo® 647 Rabbit anti-Mouse CD31 mAb (A23702, 5  $\mu$ l/Test, right).