

A23699

Leader in Biomolecular Solutions for Life Science



ABflo® 647 Rabbit anti-Human CD170/Siglec-5 mAb

Catalog No.: A23699

Basic Information

Observed MW

Calculated MW
61kDa

Category

SMab Recombinant Monoclonal Antibody

Applications

FC

Cross-Reactivity

Human

CloneNo number

ARC60966-ABf647

Conjugate

ABflo® 647. Ex:648nm. Em:664nm.

Background

This gene encodes a member of the sialic acid-binding immunoglobulin-like lectin (Siglec) family. These cell surface lectins are characterized by structural motifs in the immunoglobulin (Ig)-like domains and sialic acid recognition sites in the first Ig V set domain. The encoded protein is a member of the CD33-related subset of Siglecs and inhibits the activation of several cell types including monocytes, macrophages and neutrophils. Binding of group B Streptococcus (GBS) to the encoded protein plays a role in GBS immune evasion.

Recommended Dilutions

FC 5 µl per 10⁶ cells in
100 µl volume

Immunogen Information

Gene ID
8778

Swiss Prot
O15389

Immunogen

Recombinant fusion protein containing a sequence corresponding to amino acids 17-434 of human CD170/Siglec-5 (NP_003821.1).

Synonyms

CD170; OBBP2; CD33L2; OB-BP2; SIGLEC-5

Contact



www.abclonal.com

Product Information

Source
Rabbit

Isotype
IgG

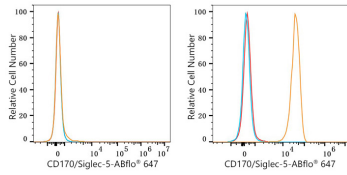
Purification
Affinity purification

Storage

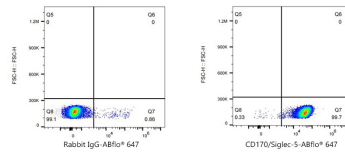
Store at 2-8°C. Avoid freeze.

Buffer: PBS with 0.03% proclin300,0.2% BSA,pH7.3.

Validation Data



Flow cytometry: 1×10^6 K562 cells (negative control, left) and U937 cells (right) were surface-stained with ABflo® 647 Rabbit anti-Human CD170/Siglec-5 mAb (A23699, 5 μ l/Test, orange line) or ABflo® 647 Rabbit IgG isotype control (A22070, 5 μ l/Test, blue line). Non-fluorescently stained cells were used as blank control (red line).



Flow cytometry: 1×10^6 U937 cells were surface-stained with ABflo® 647 Rabbit IgG isotype control (A22070, 5 μ l/Test, left) or ABflo® 647 Rabbit anti-Human CD170/Siglec-5 mAb (A23699, 5 μ l/Test, right).