

A23698

Leader in Biomolecular Solutions for Life Science



## ABflo® 488 Rabbit anti-Human CD170/Siglec-5 mAb

Catalog No.: A23698

### Basic Information

#### Observed MW

**Calculated MW**  
61kDa

#### Category

SMab Recombinant Monoclonal Antibody

#### Applications

FC

#### Cross-Reactivity

Human

#### CloneNo number

ARC60966-ABf488

#### Conjugate

ABflo® 488. Ex:491nm. Em:516nm.

### Background

This gene encodes a member of the sialic acid-binding immunoglobulin-like lectin (Siglec) family. These cell surface lectins are characterized by structural motifs in the immunoglobulin (Ig)-like domains and sialic acid recognition sites in the first Ig V set domain. The encoded protein is a member of the CD33-related subset of Siglecs and inhibits the activation of several cell types including monocytes, macrophages and neutrophils. Binding of group B Streptococcus (GBS) to the encoded protein plays a role in GBS immune evasion.

### Recommended Dilutions

**FC** 5 µl per 10<sup>6</sup> cells in  
100 µl volume

### Immunogen Information

**Gene ID**  
8778

**Swiss Prot**  
O15389

#### Immunogen

Recombinant fusion protein containing a sequence corresponding to amino acids 17-434 of human CD170/Siglec-5 (NP\_003821.1).

#### Synonyms

CD170; OBBP2; CD33L2; OB-BP2; SIGLEC-5

### Contact



[www.abclonal.com](http://www.abclonal.com)

### Product Information

**Source**  
Rabbit

**Isotype**  
IgG

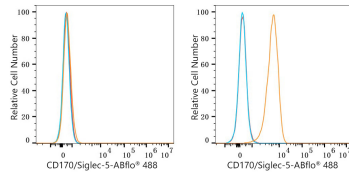
**Purification**  
Affinity purification

#### Storage

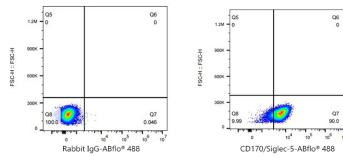
Store at 2-8°C. Avoid freeze.

Buffer: PBS with 0.03% proclin300, 0.2% BSA, pH7.3.

## Validation Data



Flow cytometry:  $1 \times 10^6$  K562 cells (negative control, left) and U937 cells (right) were surface-stained with ABflo® 488 Rabbit anti-Human CD170/Siglec-5 mAb (A23698, 5  $\mu$ l/Test, orange line) or ABflo® 488 Rabbit IgG isotype control (A22069, 5  $\mu$ l/Test, blue line). Non-fluorescently stained cells were used as blank control (red line).



Flow cytometry:  $1 \times 10^6$  U937 cells were surface-stained with ABflo® 488 Rabbit IgG isotype control (A22069, 5  $\mu$ l/Test, left) or ABflo® 488 Rabbit anti-Human CD170/Siglec-5 mAb (A23698, 5  $\mu$ l/Test, right).