

A23697

Leader in Biomolecular Solutions for Life Science



ABflo® 647 Rabbit anti-Human IgE mAb

Catalog No.: A23697

Basic Information

Observed MW

Calculated MW

47kDa/47kDa/54kDa/59kDa

Category

SMab Recombinant Monoclonal Antibody

Applications

FC

Cross-Reactivity

Human

CloneNo number

ARC60066-ABf647

Conjugate

ABflo® 647. Ex:648nm. Em:664nm.

Background

IgE is the class of antibodies produced in the lungs, skin, and mucous membranes. It may protect against parasite invasion, but it is a major factor in allergic reactions. The antigen-specific IgE interacts with mast cells and eosinophils, triggers the release of histamine, leukotrienes and other substances that lead to the itching, sneezing and congestion of allergies - and the life threatening respiratory distress of asthma and anaphylactic shock.

Recommended Dilutions

FC 5 µl per 10⁶ cells in
100 µl volume

Immunogen Information

Gene ID

3497

Swiss Prot

P01854

Immunogen

Recombinant fusion protein containing a sequence corresponding to amino acids 104-428 of human IgE (P01854).

Synonyms

IgE

Contact



www.abclonal.com

Product Information

Source

Rabbit

Isotype

IgG

Purification

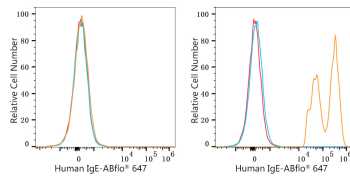
Affinity purification

Storage

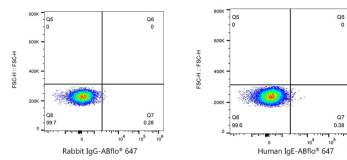
Store at 2-8°C. Avoid freeze.

Buffer: PBS with 0.03% proclin300, 0.2% BSA, pH7.3.

Validation Data



Flow cytometry: 1×10^6 Hela cells (negative control, left) and Human PBMC (right) were surface-stained with ABflo® 647 Rabbit anti-Human IgE mAb (A23697, 5 μ l/Test, orange line) or ABflo® 647 Rabbit IgG isotype control (A22070, 5 μ l/Test, blue line). Non-fluorescently stained cells were used as blank control (red line).



Flow cytometry: 1×10^6 Human PBMC were surface-stained with ABflo® 647 Rabbit IgG isotype control (A22070, 5 μ l/Test, left) or ABflo® 647 Rabbit anti-Human IgE mAb (A23697, 5 μ l/Test, right).