

A23687

Leader in Biomolecular Solutions for Life Science



## PFKL Rabbit mAb

Catalog No.: A23687

Recombinant

### Basic Information

**Observed MW**

85kDa

**Calculated MW**

85kDa

**Category**

SMab Recombinant Monoclonal Antibody

**Applications**

WB,IHC-P,ELISA

**Cross-Reactivity**

Human,Mouse,Rat

**CloneNo number**

ARC61079

### Background

This gene encodes the liver (L) subunit of an enzyme that catalyzes the conversion of D-fructose 6-phosphate to D-fructose 1,6-bisphosphate, which is a key step in glucose metabolism (glycolysis). This enzyme is a tetramer that may be composed of different subunits encoded by distinct genes in different tissues. Alternative splicing results in multiple transcript variants.

### Recommended Dilutions

WB 1:1000 - 1:5000

IHC-P 1:50 - 1:200

### Immunogen Information

**Gene ID**

5211

**Swiss Prot**

P17858

**Immunogen**

Recombinant protein of human PFKL

**Synonyms**

PFK-B; PFK-L; ATP-PFK; PFKL

### Contact



[www.abclonal.com](http://www.abclonal.com)

### Product Information

**Source**

Rabbit

**Isotype**

IgG

**Purification**

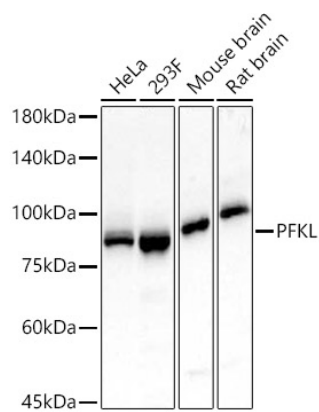
Affinity purification

**Storage**

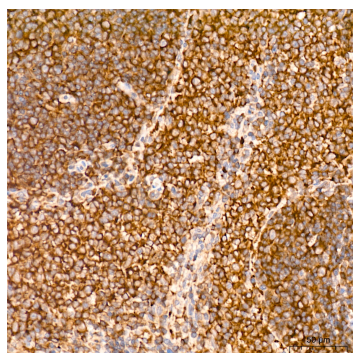
Store at -20°C. Avoid freeze / thaw cycles.

Buffer: PBS with 0.05% proclin300,0.05% BSA,50% glycerol,pH7.3.

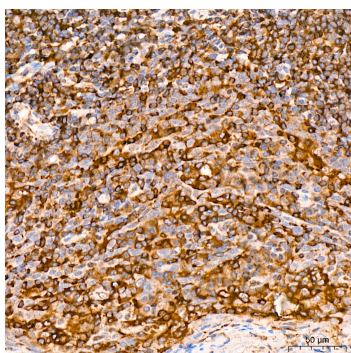
## Validation Data



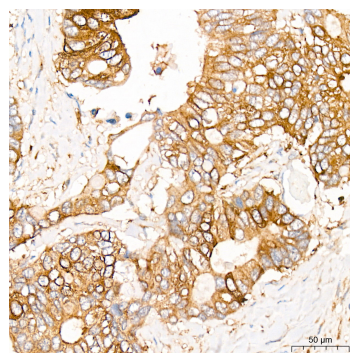
Western blot analysis of various lysates, using PFKL Rabbit mAb (A23687) at 1:1500 dilution.  
 Secondary antibody: HRP Goat Anti-Rabbit IgG (H+L) (A5014) at 1:10000 dilution.  
 Lysates/proteins: 25µg per lane.  
 Blocking buffer: 3% nonfat dry milk in TBST.  
 Detection: ECL Basic Kit (RM00020).  
 Exposure time: 30s.



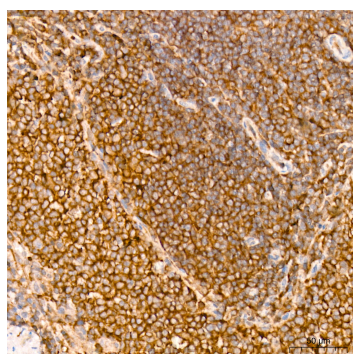
Immunohistochemistry analysis of PFKL in paraffin-embedded mouse spleen tissue using PFKL Rabbit mAb (A23687) at a dilution of 1:200 (40x lens). High pressure antigen retrieval was performed with 0.01 M citrate buffer (pH 6.0) prior to IHC staining.



Immunohistochemistry analysis of PFKL in paraffin-embedded human tonsil tissue using PFKL Rabbit mAb (A23687) at a dilution of 1:200 (40x lens). High pressure antigen retrieval was performed with 0.01 M citrate buffer (pH 6.0) prior to IHC staining.



Immunohistochemistry analysis of PFKL in paraffin-embedded human colon carcinoma tissue using PFKL Rabbit mAb (A23687) at a dilution of 1:200 (40x lens). High pressure antigen retrieval was performed with 0.01 M citrate buffer (pH 6.0) prior to IHC staining.



Immunohistochemistry analysis of PFKL in paraffin-embedded rat spleen tissue using PFKL Rabbit mAb (A23687) at a dilution of 1:200 (40x lens). High pressure antigen retrieval was performed with 0.01 M citrate buffer (pH 6.0) prior to IHC staining.