

## MonoMethyl-Histone H3-K36 pAb

<b>Catalog No.</b>	A2364	<b>Category</b>	Methylated Antibodies
<b>Applications</b>	WB, IHC, IF, IP, ChIP, ChIPseq	<b>Observed MW</b>	16kDa
<b>Cross-reactivity</b>	Human, Mouse, Rat, Other (Wide Range)	<b>Calculated MW</b>	15kDa

### Immunogen Information

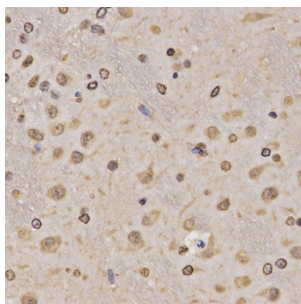
<b>Immunogen</b>	A synthetic methylated peptide corresponding to residues surrounding K36 of human histone H3
<b>Gene ID</b>	8290
<b>Swiss prot</b>	Q16695
<b>Synonyms</b>	H3.4;H3/g;H3FT;H3t

### Product information

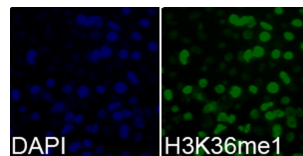
<b>Source</b>	Rabbit
<b>Isotype</b>	IgG
<b>Purification method</b>	Affinity purification
<b>Storage</b>	Store at -20°C. Avoid freeze / thaw cycles. Buffer: PBS with 0.02% sodium azide, 50% glycerol, pH7.3.

### Background

Histones are basic nuclear proteins that are responsible for the nucleosome structure of the chromosomal fiber in eukaryotes. Nucleosomes consist of approximately 146 bp of DNA wrapped around a histone octamer composed of pairs of each of the four core histones (H2A, H2B, H3, and H4). The chromatin fiber is further compacted through the interaction of a linker histone, H1, with the DNA between the nucleosomes to form higher order chromatin structures. This gene is intronless and encodes a replication-dependent histone that is a member of the histone H3 family. Transcripts from this gene lack polyA tails; instead, they contain a palindromic termination element. This gene is located separately from the other H3 genes that are in the histone gene cluster on chromosome 6p22-p21.3.



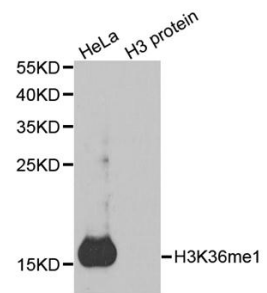
Immunohistochemistry of paraffin-embedded rat brain using MonoMethyl-Histone H3-K36 antibody (A2364) at dilution of 1:200 (40x lens).



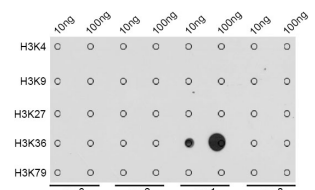
Immunofluorescence analysis of 293T cells using MonoMethyl-Histone H3-K36 antibody (A2364). Blue: DAPI for nuclear staining.

### Recommended Dilutions

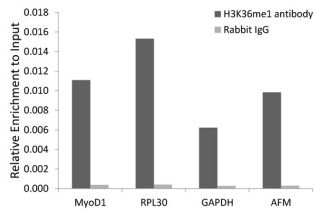
WB 1:500 - 1:2000
IHC 1:50 - 1:200
IF 1:50 - 1:200
IP 1:50 - 1:200
ChIP 1:20 - 1:100
ChIPseq 1:20 - 1:100



Western blot analysis of extracts of various cell lines, using MonoMethyl-Histone H3-K36 antibody (A2364). Secondary antibody: HRP Goat Anti-Rabbit IgG (H+L) (AS014) at 1:10000 dilution. Lysates/proteins: 25ug per lane. Blocking buffer: 3% nonfat dry milk in TBST.



Dot-blot analysis of all sorts of methylation peptides using MonoMethyl-Histone H3-K36 antibody (A2364).



Chromatin immunoprecipitation analysis extracts of 293 cell line, using MonoMethyl-Histone H3-K36 antibody (A2364) and rabbit IgG. The amount of immunoprecipitated DNA was checked by quantitative PCR. Histogram was constructed by the ratios of the immunoprecipitated DNA to the input.