

A23532

Leader in Biomolecular Solutions for Life Science



Proenkephalin-A Rabbit mAb

Catalog No.: A23532

Recombinant

Basic Information

Observed MW

36kDa

Calculated MW

31kDa

Category

SMab Recombinant Monoclonal Antibody

Applications

WB,IF/ICC,ELISA

Cross-Reactivity

Human,Mouse,Rat

CloneNo number

ARC60842

Background

This gene encodes a preproprotein that is proteolytically processed to generate multiple protein products. These products include the pentapeptide opioids Met-enkephalin and Leu-enkephalin, which are stored in synaptic vesicles, then released into the synapse where they bind to mu- and delta-opioid receptors to modulate the perception of pain. Other non-opioid cleavage products may function in distinct biological activities.

Recommended Dilutions

WB	1:500 - 1:1000
IF/ICC	1:50 - 1:200

Immunogen Information

Gene ID

5179

Swiss Prot

P01210

Immunogen

Recombinant protein of human Proenkephalin-A.

Synonyms

PE; PENK-A; Proenkephalin-A

Contact



www.abclonal.com

Product Information

Source

Rabbit

Isotype

IgG

Purification

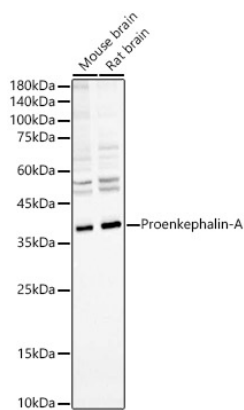
Affinity purification

Storage

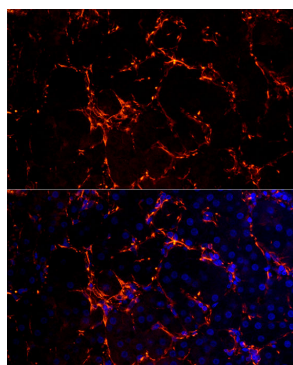
Store at -20°C. Avoid freeze / thaw cycles.

Buffer: PBS with 0.05% proclin300,0.05% BSA,50% glycerol,pH7.3.

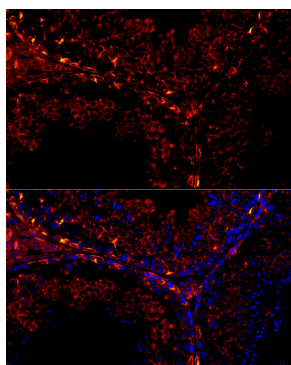
Validation Data



Western blot analysis of various lysates, using Proenkephalin-A Rabbit mAb antibody (A23532) at 1:1000 dilution.
 Secondary antibody: HRP Goat Anti-Rabbit IgG (H+L) (AS014) at 1:10000 dilution.
 Lysates/proteins: 25µg per lane.
 Blocking buffer: 3% nonfat dry milk in TBST.
 Detection: ECL Basic Kit (RM00020).
 Exposure time: 90s.



Perform high pressure antigen retrieval with 10 mM citrate buffer pH 6.0 before commencing with IF staining protocol. Immunofluorescence analysis of Human adrenal gland using Proenkephalin-A Rabbit mAb (A23532) at dilution of 1:100 (40x lens). Blue: DAPI for nuclear staining.



Perform microwave antigen retrieval with 10 mM citrate buffer pH 6.0 before commencing with IF staining protocol. Immunofluorescence analysis of mouse testis using Proenkephalin-A Rabbit mAb (A23532) at dilution of 1:100 (40x lens). Blue: DAPI for nuclear staining.