

A23530

Leader in Biomolecular Solutions for Life Science



# Mitofilin Rabbit mAb

Catalog No.: A23530 **Recombinant**

## Basic Information

### Observed MW

90kDa

### Calculated MW

84kDa

### Category

SMab Recombinant Monoclonal Antibody

### Applications

WB,IHC-P,IP,ELISA

### Cross-Reactivity

Human,Mouse

### CloneNo number

ARC61198

## Background

Enables RNA binding activity. Involved in cristae formation. Located in mitochondrial inner membrane. Part of MICOS complex.

## Recommended Dilutions

**WB** 1:500 - 1:1000

**IHC-P** 1:50 - 1:200

**IP** 0.5µg-4µg antibody for  
200µg-400µg extracts of  
whole cells

## Immunogen Information

### Gene ID

10989

### Swiss Prot

Q16891

### Immunogen

Recombinant protein of human Mitofilin.

### Synonyms

HMP; P87; P89; PIG4; Mic60; PIG52; MINOS2; P87/89; MICOS60; Mitofilin

## Contact



[www.abclonal.com](http://www.abclonal.com)

## Product Information

### Source

Rabbit

### Isotype

IgG

### Purification

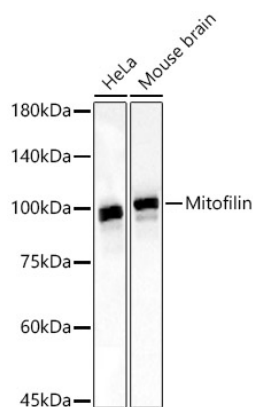
Affinity purification

### Storage

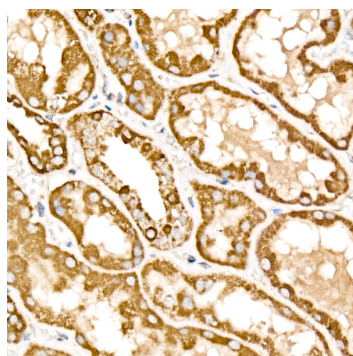
Store at -20°C. Avoid freeze / thaw cycles.

Buffer: PBS with 0.05% proclin300,0.05% BSA,50% glycerol,pH7.3.

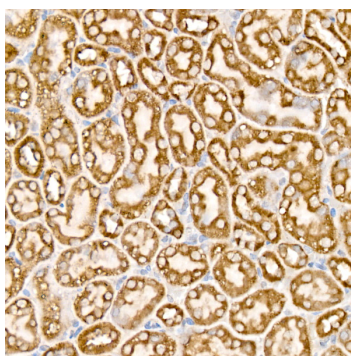
## Validation Data



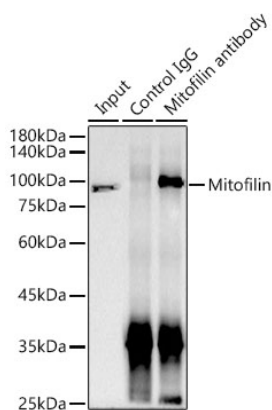
Western blot analysis of various lysates, using Mitofilin Rabbit mAb (A23530) at 1:1000 dilution.  
Secondary antibody: HRP Goat Anti-Rabbit IgG (H+L) (A5014) at 1:10000 dilution.  
Lysates/proteins: 25µg per lane.  
Blocking buffer: 3% nonfat dry milk in TBST.  
Detection: ECL Basic Kit (RM00020).  
Exposure time: 3s.



Immunohistochemistry analysis of Mitofilin in paraffin-embedded human kidney using Mitofilin Rabbit mAb (A23530) at dilution of 1:200 (40x lens). Perform high pressure antigen retrieval with 10 mM citrate buffer pH 6.0 before commencing with IHC staining protocol.



Immunohistochemistry analysis of Mitofilin in paraffin-embedded mouse kidney using Mitofilin Rabbit mAb (A23530) at dilution of 1:200 (40x lens). Perform high pressure antigen retrieval with 10 mM citrate buffer pH 6.0 before commencing with IHC staining protocol.



Immunoprecipitation analysis of 300 µg extracts of 293F cells using 3 µg Mitofilin Rabbit mAb (A23530). Western blot was performed from the immunoprecipitate using Mitofilin Rabbit mAb (A23530) at a dilution of 1:10000.