

A23524

Leader in Biomolecular Solutions for Life Science



HK1 Rabbit mAb

Catalog No.: A23524 **Recombinant**

Basic Information

Observed MW

102kDa

Calculated MW

102kDa

Category

SMab Recombinant Monoclonal Antibody

Applications

WB,IF/ICC,ELISA

Cross-Reactivity

Human,Mouse,Rat

CloneNo number

ARC51068

Background

Hexokinases phosphorylate glucose to produce glucose-6-phosphate, the first step in most glucose metabolism pathways. This gene encodes a ubiquitous form of hexokinase which localizes to the outer membrane of mitochondria. Mutations in this gene have been associated with hemolytic anemia due to hexokinase deficiency. Alternative splicing of this gene results in several transcript variants which encode different isoforms, some of which are tissue-specific.

Recommended Dilutions

WB	1:500 - 1:1000
IF/ICC	1:50 - 1:200

Immunogen Information

Gene ID

3098

Swiss Prot

P19367

Immunogen

Recombinant fusion protein containing a sequence corresponding to amino acids 21-219 of human HK1 (NP_000179.2).

Synonyms

HK; HKD; HKI; HXK1; NMSR; RP79; HMSNR; HK1-ta; HK1-tb; HK1-tc; NEDVIBA; hexokinase

Contact



www.abclonal.com

Product Information

Source

Rabbit

Isotype

IgG

Purification

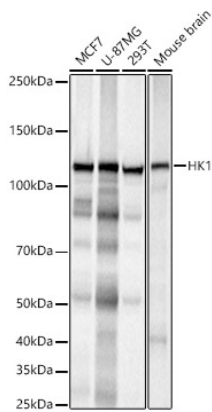
Affinity purification

Storage

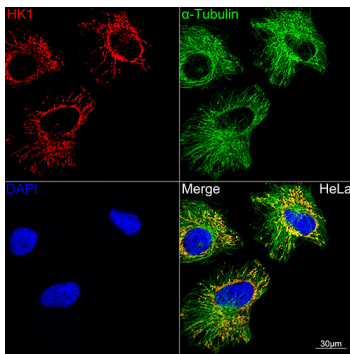
Store at -20°C. Avoid freeze / thaw cycles.

Buffer: PBS with 0.05% proclin300,0.05% BSA,50% glycerol,pH7.3.

Validation Data



Western blot analysis of various lysates, using [KO Validated] HK1 Rabbit mAb (A23524) at 1:1000 dilution.
 Secondary antibody: HRP Goat Anti-Rabbit IgG (H+L) (AS014) at 1:10000 dilution.
 Lysates/proteins: 25µg per lane.
 Blocking buffer: 3% nonfat dry milk in TBST.
 Detection: ECL Basic Kit (RM00020).
 Exposure time: 3s.



Confocal imaging of HeLa cells using [KO Validated] HK1 Rabbit mAb (A23524, dilution 1:100) (Red). The cells were counterstained with α-Tubulin Mouse mAb (AC012, dilution 1:400) (Green). DAPI was used for nuclear staining (blue). Objective: 60x.