

A23497

Leader in Biomolecular Solutions for Life Science



Integrin- β 1/CD29 Rabbit mAb

Catalog No.: A23497

Recombinant

Basic Information

Observed MW

135kDa

Calculated MW

88kDa

Category

SMab Recombinant Monoclonal Antibody

Applications

WB,IHC-P,IF/ICC,FC,ELISA

Cross-Reactivity

Human,Mouse,Rat

CloneNo number

ARC52470

Background

Integrins are heterodimeric proteins made up of alpha and beta subunits. At least 18 alpha and 8 beta subunits have been described in mammals. Integrin family members are membrane receptors involved in cell adhesion and recognition in a variety of processes including embryogenesis, hemostasis, tissue repair, immune response and metastatic diffusion of tumor cells. This gene encodes a beta subunit. Multiple alternatively spliced transcript variants which encode different protein isoforms have been found for this gene.

Recommended Dilutions

WB	1:10000 - 1:30000
IHC-P	1:1000 - 1:5000
IF/ICC	1:50 - 1:200
FC	1:50 - 1:200

Immunogen Information

Gene ID

3688

Swiss Prot

P05556

Immunogen

Recombinant fusion protein containing a sequence corresponding to amino acids 1-728 of human Integrin- β 1/CD29 (NP_596867.1).

Synonyms

CD29; FNRB; MDF2; VLAB; GPIIA; MSK12; VLA-BETA; Integrin- β 1/CD29

Contact



www.abclonal.com

Product Information

Source

Rabbit

Isotype

IgG

Purification

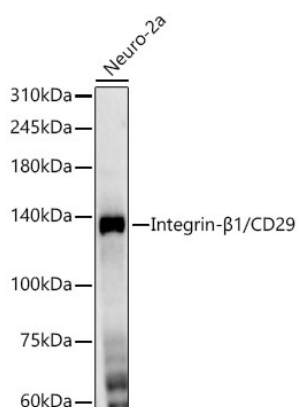
Affinity purification

Storage

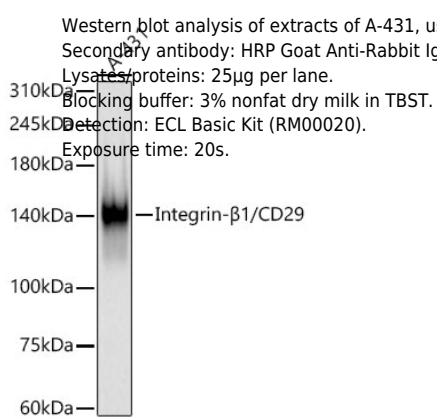
Store at -20°C. Avoid freeze / thaw cycles.

Buffer: PBS with 0.05% proclin300,0.05% BSA,50% glycerol,pH7.3.

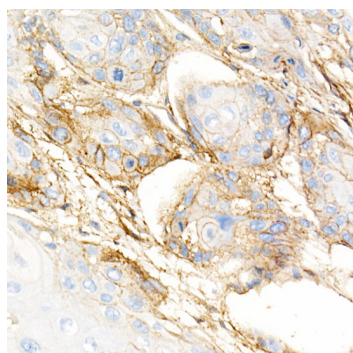
Validation Data



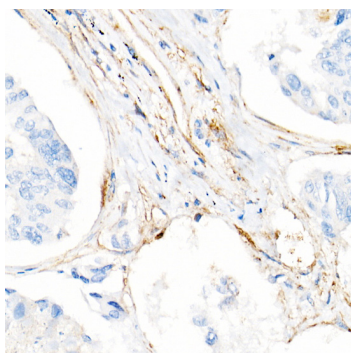
Western blot analysis of extracts of Neuro-2a, using Integrin-β1/CD29 antibody (A23497) at 1:20000 dilution.
 Secondary antibody: HRP Goat Anti-Rabbit IgG (H+L) (AS014) at 1:10000 dilution.
 Lysates/proteins: 25μg per lane.
 Blocking buffer: 3% nonfat dry milk in TBST.
 Detection: ECL Enhanced Kit (RM00021).
 Exposure time: 120s.



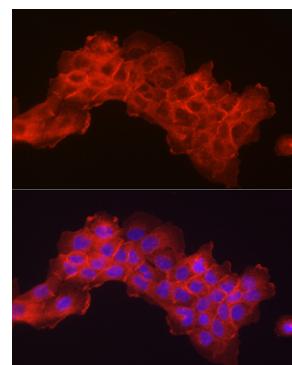
Western blot analysis of extracts of A-431, using Integrin-β1/CD29 antibody (A23497) at 1:20000 dilution.
 Secondary antibody: HRP Goat Anti-Rabbit IgG (H+L) (AS014) at 1:10000 dilution.
 Lysates/proteins: 25μg per lane.
 Blocking buffer: 3% nonfat dry milk in TBST.
 Detection: ECL Basic Kit (RM00020).
 Exposure time: 20s.



Immunohistochemistry analysis of paraffin-embedded human esophageal cancer using Integrin-β1/CD29 Rabbit mAb (A23497) at dilution of 1:5000(40x lens). Perform high pressure antigen retrieval with 10 mM citrate buffer pH 6.0 before commencing with IHC staining protocol.

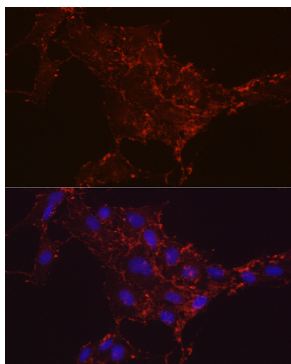


Immunohistochemistry analysis of paraffin-embedded human lung cancer using Integrin-β1/CD29 Rabbit mAb (A23497) at dilution of 1:5000(40x lens). Perform high pressure antigen retrieval with 10 mM citrate buffer pH 6.0 before commencing with IHC staining protocol.

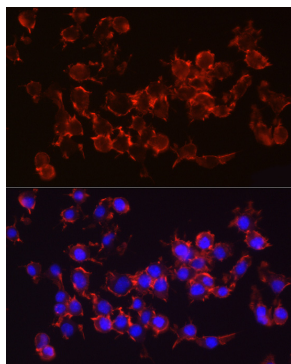


Immunofluorescence analysis of A-431 using Integrin-β1/CD29 Rabbit mAb (A23497) at dilution of 1:100 (40x lens). Blue: DAPI for nuclear staining.

Validation Data



Immunofluorescence analysis of C6 using Integrin-β1/CD29 Rabbit mAb (A23497) at dilution of 1:100 (40x lens). Blue: DAPI for nuclear staining.



Immunofluorescence analysis of Neuro-2a using Integrin-β1/CD29 Rabbit mAb (A23497) at dilution of 1:100 (40x lens). Blue: DAPI for nuclear staining.