

A23457

Leader in Biomolecular Solutions for Life Science



HSP70 Rabbit mAb

Catalog No.: A23457

Recombinant

Basic Information

Observed MW

70kDa

Calculated MW

70kDa

Category

SMab Recombinant Monoclonal Antibody

Applications

WB, IHC-P, IF/ICC, ELISA

Cross-Reactivity

Human, Mouse, Rat

CloneNo number

ARC53082

Background

This intronless gene encodes a 70kDa heat shock protein which is a member of the heat shock protein 70 family. In conjunction with other heat shock proteins, this protein stabilizes existing proteins against aggregation and mediates the folding of newly translated proteins in the cytosol and in organelles. It is also involved in the ubiquitin-proteasome pathway through interaction with the AU-rich element RNA-binding protein 1. The gene is located in the major histocompatibility complex class III region, in a cluster with two closely related genes which encode similar proteins.

Recommended Dilutions

WB	1:2000 - 1:12000
IHC-P	1:1000 - 1:5000
IF/ICC	1:50 - 1:200

Immunogen Information

Gene ID

3303/3304

Swiss Prot

P0DMV8/P0DMV9

Immunogen

Recombinant protein of human HSP70.

Synonyms

HSP70; HSP72; HSPA1; HSP70I; HSP70-1; HSP70-2; HSP70.1; HSP70.2; HSP70-1A; HEL-S-103

Contact



www.abclonal.com

Product Information

Source

Rabbit

Isotype

IgG

Purification

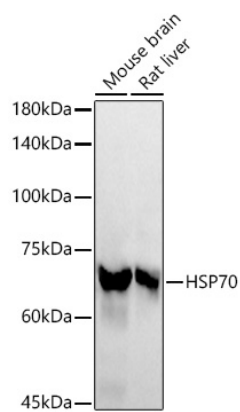
Affinity purification

Storage

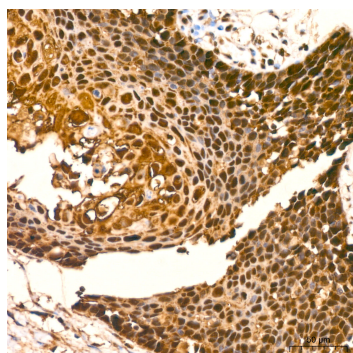
Store at -20°C. Avoid freeze / thaw cycles.

Buffer: PBS with 0.05% proclin300, 0.05% BSA, 50% glycerol, pH7.3.

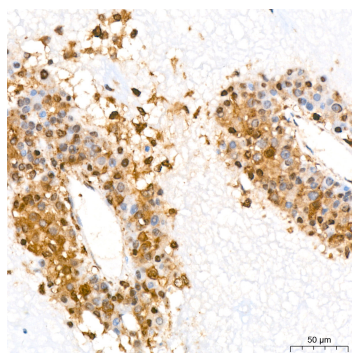
Validation Data



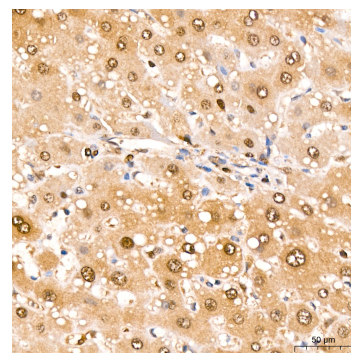
Western blot analysis of various lysates, using HSP70 Rabbit mAb (A23457) at 1:10000 dilution. Secondary antibody: HRP Goat Anti-Rabbit IgG (H+L) (A5014) at 1:10000 dilution. Lysates/proteins: 25µg per lane. Blocking buffer: 3% nonfat dry milk in TBST. Detection: ECL Basic Kit (RM00020).. Exposure time: 30s.



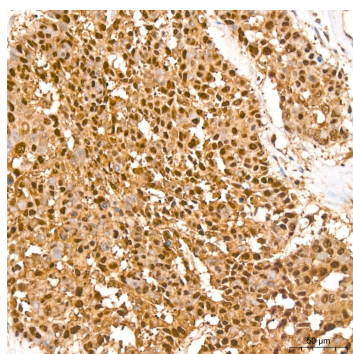
Immunohistochemistry analysis of HSP70 in paraffin-embedded human cervix cancer tissue using HSP70 Rabbit mAb (A23457) at a dilution of 1:4000 (40x lens). High pressure antigen retrieval was performed with 0.01 M citrate buffer (pH 6.0) prior to IHC staining.



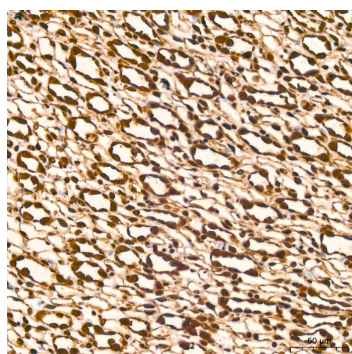
Immunohistochemistry analysis of HSP70 in paraffin-embedded human liver cancer tissue using HSP70 Rabbit mAb (A23457) at a dilution of 1:4000 (40x lens). High pressure antigen retrieval was performed with 0.01 M citrate buffer (pH 6.0) prior to IHC staining.



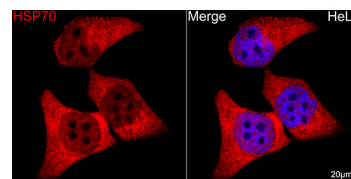
Immunohistochemistry analysis of HSP70 in paraffin-embedded human liver tissue using HSP70 Rabbit mAb (A23457) at a dilution of 1:4000 (40x lens). High pressure antigen retrieval was performed with 0.01 M citrate buffer (pH 6.0) prior to IHC staining.



Immunohistochemistry analysis of HSP70 in paraffin-embedded human lung cancer tissue using HSP70 Rabbit mAb (A23457) at a dilution of 1:4000 (40x lens). High pressure antigen retrieval was performed with 0.01 M citrate buffer (pH 6.0) prior to IHC staining.



Immunohistochemistry analysis of HSP70 in paraffin-embedded mouse kidney tissue using HSP70 Rabbit mAb (A23457) at a dilution of 1:4000 (40x lens). High pressure antigen retrieval was performed with 0.01 M citrate buffer (pH 6.0) prior to IHC staining.



Confocal imaging of HeLa cells using HSP70 Rabbit mAb (A4777, dilution 1:100) (Red). DAPI was used for nuclear staining (blue). Objective: 60x.