

A23407

Leader in Biomolecular Solutions for Life Science



## ABflo® 488 Rabbit anti-Human Ki67 mAb

Catalog No.: A23407

### Basic Information

#### Observed MW

Refer to figures

#### Calculated MW

319kDa/359kDa

#### Category

SMab Recombinant Monoclonal Antibody

#### Applications

FC (intra)

#### Cross-Reactivity

Human

#### CloneNo number

ARC57564-ABf488

#### Conjugate

ABflo® 488. Ex:491nm. Em:516nm.

### Background

Enables protein C-terminus binding activity. Involved in regulation of chromosome segregation and regulation of mitotic nuclear division. Located in chromosome; nuclear body; and nucleolus. Colocalizes with condensed chromosome. Implicated in Crohn's disease; breast cancer; human immunodeficiency virus infectious disease; and pancreatic cancer. Biomarker of several diseases, including Barrett's esophagus; autoimmune disease of musculoskeletal system (multiple); endocrine gland cancer (multiple); gastrointestinal system cancer (multiple); and interstitial cystitis.

### Recommended Dilutions

**FC (intra)**      5 µl per 10<sup>6</sup> cells in  
100 µl volume

### Immunogen Information

#### Gene ID

4288

#### Swiss Prot

P46013

#### Immunogen

Recombinant fusion protein containing a sequence corresponding to amino acids 2245-2345 of human MKI67 (NP\_002408.3).

#### Synonyms

KIA; MIB-; MIB-1; PPP1R105

### Contact



[www.abclonal.com](http://www.abclonal.com)

### Product Information

#### Source

Rabbit

#### Isotype

IgG

#### Purification

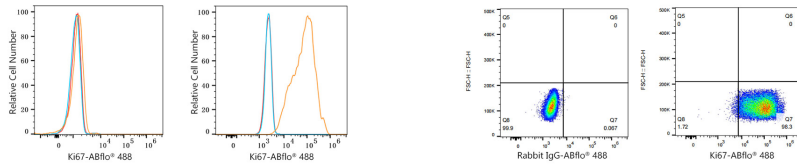
Affinity purification

#### Storage

Store at 2-8°C. Avoid freeze.

Buffer: PBS with 0.03% proclin300,0.2% BSA,pH7.3.

## Validation Data



Flow cytometry:1X10<sup>6</sup> knockout (KO) HeLa cells(negative control,left) and HeLa cells (right) were intracellularly-stained with ABflo® 488 Rabbit anti-Human Ki67 mAb(A23407,5 µl/Test,orange line) or ABflo® 488 Rabbit IgG isotype control (A22069,5 µl/Test,blue line).Non-fluorescently stained cells was used as blank control (red line).

Flow cytometry:1X10<sup>6</sup> Hela cells were intracellularly-stained with ABflo® 488 Rabbit IgG isotype control (A22069,5 µl/Test,left) or ABflo® 488 Rabbit anti-Human Ki67 mAb(A23407,5 µl/Test,right).