

A23282

Leader in Biomolecular Solutions for Life Science



DARPP32 Rabbit mAb

Catalog No.: A23282 **Recombinant**

Basic Information

Observed MW

32kDa/36kDa

Calculated MW

23kDa

Category

SMab Recombinant Monoclonal Antibody

Applications

WB,IF/ICC,ELISA

Cross-Reactivity

Human,Mouse,Rat

CloneNo number

ARC59935

Background

This gene encodes a bifunctional signal transduction molecule. Dopaminergic and glutamatergic receptor stimulation regulates its phosphorylation and function as a kinase or phosphatase inhibitor. As a target for dopamine, this gene may serve as a therapeutic target for neurologic and psychiatric disorders. Multiple transcript variants encoding different isoforms have been found for this gene.

Recommended Dilutions

WB 1:1000 - 1:5000

IF/ICC 1:50 - 1:200

Immunogen Information

Gene ID

84152

Swiss Prot

Q9UD71

Immunogen

A synthesized peptide derived from human DARPP32.

Synonyms

DARPP32; DARPP-32

Contact



www.abclonal.com

Product Information

Source

Rabbit

Isotype

IgG

Purification

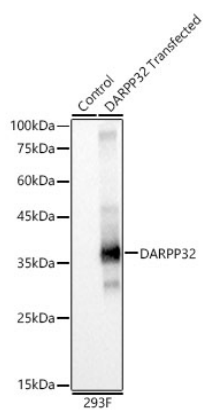
Affinity purification

Storage

Store at -20°C. Avoid freeze / thaw cycles.

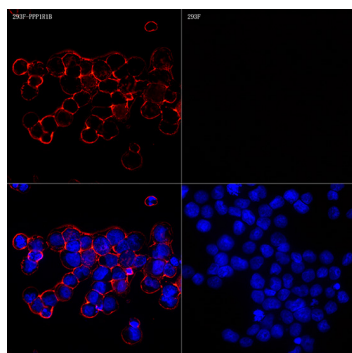
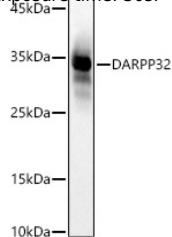
Buffer: PBS with 0.05% proclin300,0.05% BSA,50% glycerol,pH7.3.

Validation Data



Western blot analysis of lysates from wild type (WT) and 293F cells transfected with DARPP32, using DARPP32 Rabbit mAb (A23282) at 1:2000 dilution.
 Secondary antibody: HRP Goat Anti-Rabbit IgG (H+L) (AS014) at 1:10000 dilution.
 Lysates/proteins: 25µg per lane.
 Blocking buffer: 3% nonfat dry milk in TBST.
 Detection: ECL Basic Kit (RM00020).
 Exposure time: 0.5s.

Western blot analysis of lysates from Mouse brain, using DARPP32 Rabbit mAb (A23282) at 1:2000 dilution.
 Secondary antibody: HRP Goat Anti-Rabbit IgG (H+L) (AS014) at 1:10000 dilution.
 Lysates/proteins: 25µg per lane.
 Blocking buffer: 3% nonfat dry milk in TBST.
 Detection: ECL Basic Kit (RM00020).
 Exposure time: 30s.



Immunofluorescence analysis of 293F-PPP1R1B and 293F cells using DARPP32 Rabbit mAb (A23282) at dilution of 1:100 (40x lens). Secondary antibody: Cy3 Goat Anti-Rabbit IgG (H+L) (AS007) at 1:500 dilution. Blue: DAPI for nuclear staining.