

A23256

Leader in Biomolecular Solutions for Life Science



## EGF Receptor (E746-A750del Specific) Rabbit pAb

Catalog No.: A23256

### Basic Information

**Observed MW**

175kDa

**Calculated MW**

134kDa

**Category**

Polyclonal Antibody

**Applications**

WB, ELISA

**Cross-Reactivity**

Human

### Background

The protein encoded by this gene is a transmembrane glycoprotein that is a member of the protein kinase superfamily. This protein is a receptor for members of the epidermal growth factor family. EGFR is a cell surface protein that binds to epidermal growth factor, thus inducing receptor dimerization and tyrosine autophosphorylation leading to cell proliferation. Mutations in this gene are associated with lung cancer. EGFR is a component of the cytokine storm which contributes to a severe form of Coronavirus Disease 2019 (COVID-19) resulting from infection with severe acute respiratory syndrome coronavirus-2 (SARS-CoV-2).

### Recommended Dilutions

WB 1:500 - 1:1000

### Immunogen Information

**Gene ID**

1956

**Swiss Prot**

P00533

**Immunogen**

Recombinant protein of Human EGF Receptor (E746-A750del Specific).

**Synonyms**

ERBB; ERRP; HER1; mENA; ERBB1; PIG61; NISBD2

### Contact



[www.abclonal.com](http://www.abclonal.com)

### Product Information

**Source**

Rabbit

**Isotype**

IgG

**Purification**

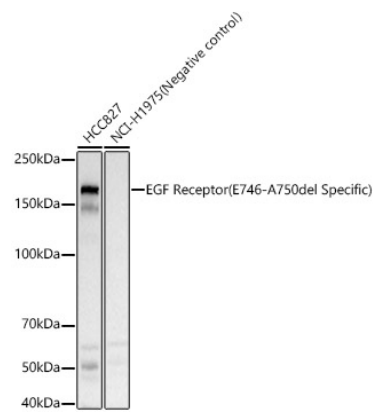
Affinity purification

**Storage**

Store at -20°C. Avoid freeze / thaw cycles.

Buffer: PBS with 0.01% thimerosal, 50% glycerol, pH7.3.

Validation Data



Western blot analysis of various lysates, using EGF Receptor (E746-A750del Specific) Rabbit pAb (A23256) at 1:400 dilution.  
Secondary antibody: HRP Goat Anti-Rabbit IgG (H+L) (AS014) at 1:10000 dilution.  
Lysates/proteins: 25µg per lane.  
Blocking buffer: 3% nonfat dry milk in TBST.  
Detection: ECL Basic Kit (RM00020).  
Exposure time: 30s.