

A23162

Leader in Biomolecular Solutions for Life Science



TET1 Rabbit mAb

Catalog No.: A23162

Recombinant

1 Publications

Basic Information

Observed MW

310kDa

Calculated MW

235kDa

Category

SMab Recombinant Monoclonal Antibody

Applications

WB, ELISA

Cross-Reactivity

Human, Mouse

CloneNo number

ARC59030

Background

DNA methylation is an epigenetic mechanism that is important for controlling gene expression. The protein encoded by this gene is a demethylase that belongs to the TET (ten-eleven translocation) family. Members of the TET protein family play a role in the DNA methylation process and gene activation.

Recommended Dilutions

WB 1:500 - 1:1000

Immunogen Information

Gene ID

80312

Swiss Prot

Q8NFU7

Immunogen

A synthetic peptide corresponding to a sequence within amino acids 1800-1900 of human TET (NP_085128.2).

Synonyms

LCX; CXXC6; bA119F7.1; TET1

Contact



www.abclonal.com

Product Information

Source

Rabbit

Isotype

IgG

Purification

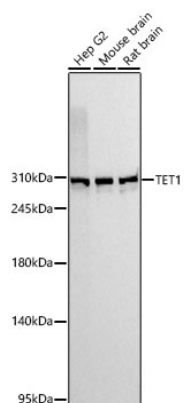
Affinity purification

Storage

Store at -20°C. Avoid freeze / thaw cycles.

Buffer: PBS with 0.05% proclin300, 0.05% BSA, 50% glycerol, pH7.3.

Validation Data



Western blot analysis of various lysates using TET1 Rabbit mAb (A23162) at 1:1000 dilution incubated overnight at 4°C.

Secondary antibody: HRP-conjugated Goat anti-Rabbit IgG (H+L) (AS014) at 1:10000 dilution.

Lysates/proteins: 25 µg per lane.

Blocking buffer: 3% nonfat dry milk in TBST.

Detection: ECL Basic Kit (RM00020).

Exposure time: 1s.