

A2312

Leader in Biomolecular Solutions for Life Science



KDM3B Rabbit pAb

Catalog No.: A2312

1 Publications

Basic Information

Observed MW

225kDa

Calculated MW

192kDa

Category

Mouse Monoclonal Antibody

Applications

WB, IHC-P, ELISA

Cross-Reactivity

Human

Background

Predicted to enable chromatin DNA binding activity; histone H3-methyl-lysine-9 demethylase activity; and transcription coregulator activity. Predicted to be involved in histone H3-K9 demethylation and regulation of transcription by RNA polymerase II. Located in nucleoplasm. Biomarker of acute lymphoblastic leukemia; breast cancer; colorectal cancer; and lung non-small cell carcinoma.

Recommended Dilutions

WB	1:500 - 1:2000
IHC-P	1:50 - 1:200

Immunogen Information

Gene ID

51780

Swiss Prot

Q7LBC6

Immunogen

Recombinant fusion protein containing a sequence corresponding to amino acids 400-600 of human KDM3B (NP_057688.2).

Synonyms

5qNCA; DIJOS; NET22; C5orf7; JMJD1B; KDM3B

Contact



www.abclonal.com

Product Information

Source

Rabbit

Isotype

IgG

Purification

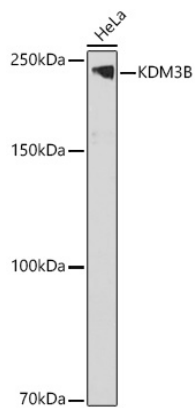
Affinity purification

Storage

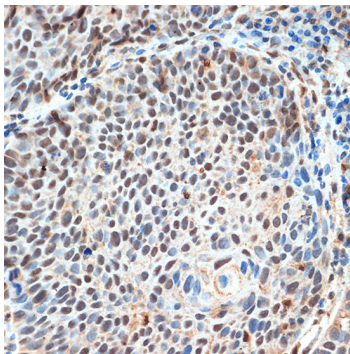
Store at -20°C. Avoid freeze / thaw cycles.

Buffer: PBS with 0.01% thimerosal, 50% glycerol, pH7.3.

Validation Data



Western blot analysis of HeLa, using KDM3B Rabbit pAb (A2312) at 1:1000 dilution.
Secondary antibody: HRP Goat Anti-Rabbit IgG (H+L) (AS014) at 1:10000 dilution.
Lysates/proteins: 25ug per lane.
Blocking buffer: 3% nonfat dry milk in TBST.
Detection: ECL Basic Kit (RM00020).
Exposure time: 90s.



Immunohistochemistry analysis of paraffin-embedded human esophageal cancer using KDM3B Rabbit pAb (A2312) at dilution of 1:100 (40x lens). Perform microwave antigen retrieval with 10 mM Tris/EDTA buffer pH 9.0 before commencing with IHC staining protocol.