

A23109

Leader in Biomolecular Solutions for Life Science



## ABflo® 488 Rabbit anti-Human ICAM2/CD102 mAb

Catalog No.: A23109

### Basic Information

#### Observed MW

**Calculated MW**  
31kDa

#### Category

SMab Recombinant Monoclonal Antibody

#### Applications

FC

#### Cross-Reactivity

Human

#### CloneNo number

ARC59369-ABf488

#### Conjugate

ABflo® 488. Ex:491nm. Em:516nm.

### Background

The protein encoded by this gene is a member of the intercellular adhesion molecule (ICAM) family. All ICAM proteins are type I transmembrane glycoproteins, contain 2-9 immunoglobulin-like C2-type domains, and bind to the leukocyte adhesion LFA-1 protein. This protein may play a role in lymphocyte recirculation by blocking LFA-1-dependent cell adhesion. It mediates adhesive interactions important for antigen-specific immune response, NK-cell mediated clearance, lymphocyte recirculation, and other cellular interactions important for immune response and surveillance. Several transcript variants encoding the same protein have been found for this gene.

### Recommended Dilutions

**FC** 5 µl per 10<sup>6</sup> cells in  
100 µl volume

### Immunogen Information

**Gene ID**  
3384

**Swiss Prot**  
P13598

#### Immunogen

Recombinant fusion protein containing a sequence corresponding to amino acids 25-223 of human ICAM2/CD102 (NP\_000864.2).

#### Synonyms

CD102

### Contact



[www.abclonal.com](http://www.abclonal.com)

### Product Information

**Source**  
Rabbit

**Isotype**  
IgG

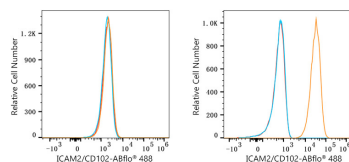
**Purification**  
Affinity purification

#### Storage

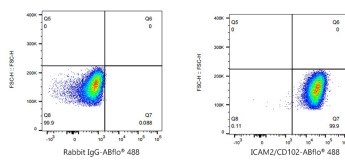
Store at 2-8°C. Avoid freeze.

Buffer: PBS with 0.03% proclin300,0.2% BSA,pH7.3.

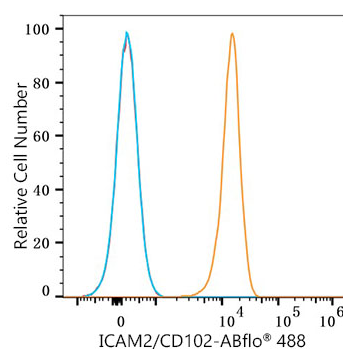
## Validation Data



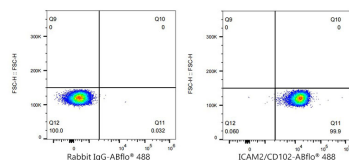
Flow cytometry:  $1 \times 10^6$  293T cells (negative control, Left) and Jurkat cells (Right) were surface-stained with ABflo® 488 Rabbit anti-Human ICAM2/CD102 mAb(A23109, 5  $\mu$ l/Test, orange line) or ABflo® 488 Rabbit IgG isotype control (A22069, 5  $\mu$ l/Test, blue line). Non-fluorescently stained cells were used as blank control (red line).



Flow cytometry:  $1 \times 10^6$  Jurkat cells were surface-stained with ABflo® 488 Rabbit IgG isotype control (A22069, 5  $\mu$ l/Test, left) or ABflo® 488 Rabbit anti-Human ICAM2/CD102 mAb(A23109, 5  $\mu$ l/Test, right).



Flow cytometry:  $1 \times 10^6$  Human PBMC were surface-stained with ABflo® 488 Rabbit anti-Human ICAM2/CD102 mAb(A23109, 5  $\mu$ l/Test, orange line) or ABflo® 488 Rabbit IgG isotype control (A22069, 5  $\mu$ l/Test, blue line). Non-fluorescently stained cells were used as blank control (red line).



Flow cytometry:  $1 \times 10^6$  Human PBMC were surface-stained with ABflo® 488 Rabbit IgG isotype control (A22069, 5  $\mu$ l/Test, left) or ABflo® 488 Rabbit anti-Human ICAM2/CD102 mAb(A23109, 5  $\mu$ l/Test, right).