

A23029

Leader in Biomolecular Solutions for Life Science



# Glucagon Rabbit mAb

Catalog No.: A23029

Recombinant

## Basic Information

### Observed MW

Refer to figures

### Calculated MW

21kDa

### Category

SMab Recombinant Monoclonal Antibody

### Applications

IHC-P,IF/ICC,ELISA

### Cross-Reactivity

Human,Mouse,Rat

### CloneNo number

ARC56936

## Background

The protein encoded by this gene is actually a preproprotein that is cleaved into four distinct mature peptides. One of these, glucagon, is a pancreatic hormone that counteracts the glucose-lowering action of insulin by stimulating glycogenolysis and gluconeogenesis. Glucagon is a ligand for a specific G-protein linked receptor whose signalling pathway controls cell proliferation. Two of the other peptides are secreted from gut endocrine cells and promote nutrient absorption through distinct mechanisms. Finally, the fourth peptide is similar to glicentin, an active enteroglucagon.

## Recommended Dilutions

IHC-P	1:1000 - 1:5000
IF/ICC	1:100 - 1:500

## Immunogen Information

### Gene ID

2641

### Swiss Prot

P01275

### Immunogen

A synthetic peptide corresponding to a sequence within amino acids 1-100 of human Glucagon (NP\_002045.1).

### Synonyms

GLP1; GLP2; GRPP; GLP-1; Glucagon

## Contact



[www.abclonal.com](http://www.abclonal.com)

## Product Information

### Source

Rabbit

### Isotype

IgG

### Purification

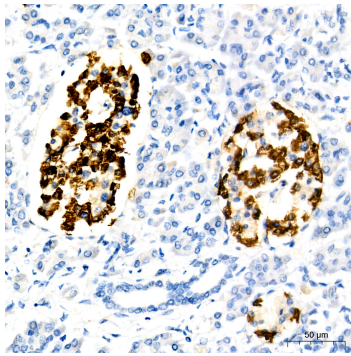
Affinity purification

### Storage

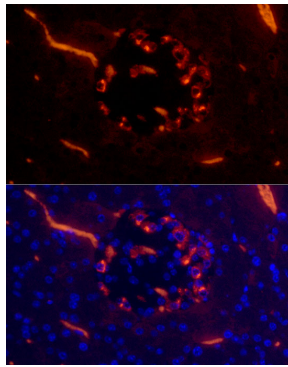
Store at -20°C. Avoid freeze / thaw cycles.

Buffer: PBS with 0.05% proclin300,0.05% BSA,50% glycerol,pH7.3.

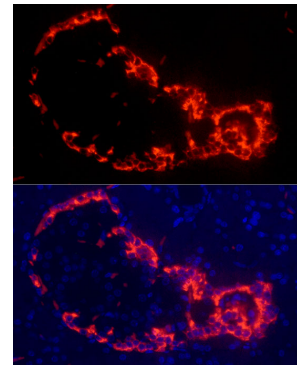
## Validation Data



Immunohistochemistry analysis of Glucagon in paraffin-embedded Human pancreas using Glucagon Rabbit mAb (A23029) at dilution of 1:2500 (40x lens). Perform high pressure antigen retrieval with 10 mM Tris/EDTA buffer pH 9.0 before commencing with IHC staining protocol.



Immunofluorescence analysis of paraffin-embedded mouse pancreas using Glucagon Rabbit mAb (A23029) at dilution of 1:500 (40x lens). Secondary antibody: Cy3 Goat Anti-Rabbit IgG (H+L) (AS007) at 1:500 dilution. Blue: DAPI for nuclear staining. Perform high pressure antigen retrieval with 0.01 M citrate buffer (pH 6.0) prior to IF staining.



Immunofluorescence analysis of paraffin-embedded rat pancreas using Glucagon Rabbit mAb (A23029) at dilution of 1:500 (40x lens). Secondary antibody: Cy3 Goat Anti-Rabbit IgG (H+L) (AS007) at 1:500 dilution. Blue: DAPI for nuclear staining. Perform high pressure antigen retrieval with 0.01 M citrate buffer (pH 6.0) prior to IF staining.