

A23020

Leader in Biomolecular Solutions for Life Science



ABflo® 488 Rabbit anti-Human CD62L/L-Selectin mAb

Catalog No.: A23020

Basic Information

Observed MW

Refer to figures

Calculated MW

42kDa/43kDa

Category

SMab Recombinant Monoclonal Antibody

Applications

FC

Cross-Reactivity

Human

CloneNo number

ARC60035-ABf488

Conjugate

ABflo® 488. Ex:491nm. Em:516nm.

Recommended Dilutions

FC 5 µl per 10⁶ cells in
100 µl volume

Background

This gene encodes a cell surface adhesion molecule that belongs to a family of adhesion/homing receptors. The encoded protein contains a C-type lectin-like domain, a calcium-binding epidermal growth factor-like domain, and two short complement-like repeats. The gene product is required for binding and subsequent rolling of leucocytes on endothelial cells, facilitating their migration into secondary lymphoid organs and inflammation sites. Single-nucleotide polymorphisms in this gene have been associated with various diseases including immunoglobulin A nephropathy. Alternatively spliced transcript variants have been found for this gene.

Immunogen Information

Gene ID

6402

Swiss Prot

P14151

Immunogen

Recombinant fusion protein containing a sequence corresponding to amino acids 39-332 of human CD62L/L-Selectin (NP_000646.3).

Synonyms

TQ1; LAM1; LEU8; LNHR; LSEL; CD62L; LYAM1; PLNHR; LECAM1

Contact



www.abclonal.com

Product Information

Source

Rabbit

Isotype

IgG

Purification

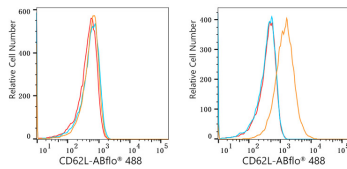
Affinity purification

Storage

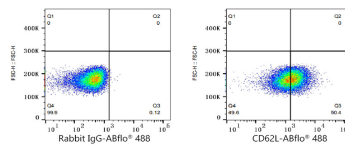
Store at 2-8°C. Avoid freeze.

Buffer: PBS with 0.03% proclin300,0.2% BSA,pH7.3.

Validation Data



Flow cytometry: 1×10^6 T-47D cells (negative control, Left) and MOLT-4 cells (Right) were surface-stained with ABflo® 488 Rabbit anti-Human CD62L/L-Selectin mAb (A23020, 5 μ l/Test, orange line) or ABflo® 488 Rabbit IgG isotype control (A22069, 5 μ l/Test, blue line). Non-fluorescently stained cells were used as blank control (red line).



Flow cytometry: 1×10^6 MOLT-4 cells were surface-stained with ABflo® 488 Rabbit IgG isotype control (A22069, 5 μ l/Test, left) or ABflo® 488 Rabbit anti-Human CD62L/L-Selectin mAb (A23020, 5 μ l/Test, right).