

A23015

Leader in Biomolecular Solutions for Life Science



# ABflo® 647 Rabbit anti-Human CD235a/Glycophorin A mAb

Catalog No.: A23015

## Basic Information

### Observed MW

Refer to figures

### Calculated MW

13kDa/16kDa

### Category

SMab Recombinant Monoclonal Antibody

### Applications

FC

### Cross-Reactivity

Human

### CloneNo number

ARC58031-ABf647

### Conjugate

ABflo® 647. Ex:648nm. Em:664nm.

## Background

Glycophorins A (GYPA) and B (GYPB) are major sialoglycoproteins of the human erythrocyte membrane which bear the antigenic determinants for the MN and Ss blood groups. In addition to the M or N and S or s antigens that commonly occur in all populations, about 40 related variant phenotypes have been identified. These variants include all the variants of the Miltenberger complex and several isoforms of Sta, as well as Dantu, Sat, He, Mg, and deletion variants Ena, S-s-U- and Mk. Most of the variants are the result of gene recombinations between GYPA and GYPB.

## Recommended Dilutions

FC 5 µl per 10<sup>6</sup> cells in  
100 µl volume

## Immunogen Information

### Gene ID

2993

### Swiss Prot

P02724

### Immunogen

Recombinant fusion protein containing a sequence corresponding to amino acids 20-91 of human CD235a (NP\_002090.4).

### Synonyms

MN; GPA; MNS; GPSAT; PAS-2; CD235a; GP<sub>E</sub>rik; HGpMiV; HGpMiXI; HGpSta(C)

## Contact



[www.abclonal.com](http://www.abclonal.com)

## Product Information

### Source

Rabbit

### Isotype

IgG

### Purification

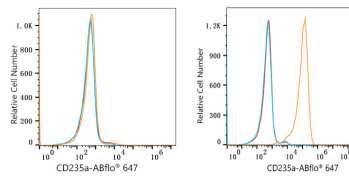
Affinity purification

### Storage

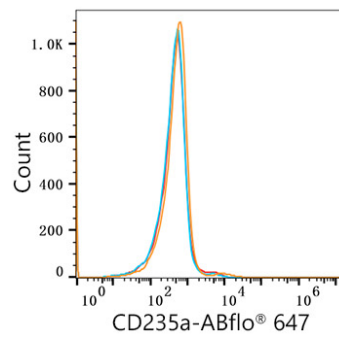
Store at 2-8°C. Avoid freeze.

Buffer: PBS with 0.03% proclin300,0.2% BSA,pH7.3.

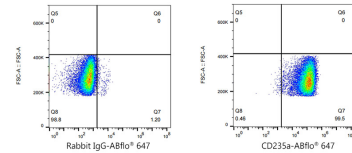
## Validation Data



Flow cytometry:  $1 \times 10^6$  THP1 cells (negative control, Left) and HEL cells (Right) were surface-stained with ABflo® 647 Rabbit anti-Human CD235a/Glycophorin A mAb (A23015, 5  $\mu$ l/Test, orange line) or ABflo® 647 Rabbit IgG isotype control (A22070, 5  $\mu$ l/Test, blue line). Non-fluorescently stained cells were used as blank control (red line).



Flow cytometry:  $1 \times 10^6$  THP1 cells (negative control) were surface-stained with ABflo® 647 Rabbit anti-Human CD235a/Glycophorin A mAb (A23015, 5  $\mu$ l/Test, orange line) or ABflo® 647 Rabbit IgG isotype control (A22070, 5  $\mu$ l/Test, blue line). Non-fluorescently stained THP1 cells were used as blank control (red line).



Flow cytometry:  $1 \times 10^6$  HEL cells were surface-stained with ABflo® 647 Rabbit IgG isotype control (A22070, 5  $\mu$ l/Test, left) or ABflo® 647 Rabbit anti-Human CD235a/Glycophorin A mAb (A23015, 5  $\mu$ l/Test, right).