

A23013

Leader in Biomolecular Solutions for Life Science



ABflo® 647 Rabbit anti-Human CD93 mAb

Catalog No.: A23013

Basic Information

Observed MW

Calculated MW
69kDa

Category

SMab Recombinant Monoclonal Antibody

Applications

FC

Cross-Reactivity

Human

CloneNo number

ARC58668-ABf647

Conjugate

ABflo® 647. Ex:648nm. Em:664nm.

Background

The protein encoded by this gene is a cell-surface glycoprotein and type I membrane protein that was originally identified as a myeloid cell-specific marker. The encoded protein was once thought to be a receptor for C1q, but now is thought to instead be involved in intercellular adhesion and in the clearance of apoptotic cells. The intracellular cytoplasmic tail of this protein has been found to interact with moesin, a protein known to play a role in linking transmembrane proteins to the cytoskeleton and in the remodelling of the cytoskeleton.

Recommended Dilutions

FC 5 µl per 10⁶ cells in
100 µl volume

Immunogen Information

Gene ID
22918

Swiss Prot
Q9NPY3

Immunogen

Recombinant fusion protein containing a sequence corresponding to amino acids 24-580 of human CD93(NP_036204.2)

Synonyms

C1QR1; C1qRP; CDw93; ECSM3; MXRA4; C1qR(P); dj737E23.1

Contact



www.abclonal.com

Product Information

Source
Rabbit

Isotype
IgG

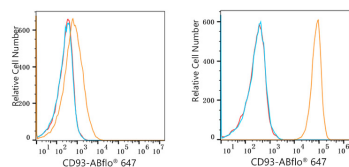
Purification
Affinity purification

Storage

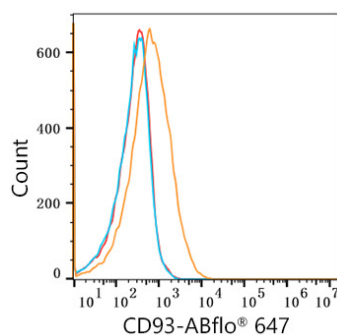
Store at 2-8°C. Avoid freeze.

Buffer: PBS with 0.03% proclin300,0.2% BSA,pH7.3.

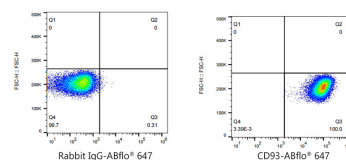
Validation Data



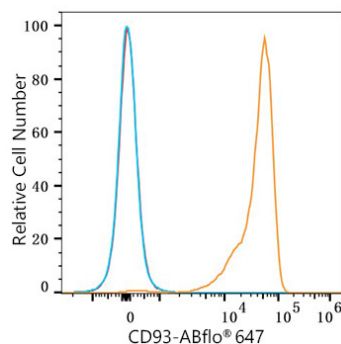
Flow cytometry: 1×10^6 Jurkat cells (negative control, Left) and U-937 cells (Right) were surface-stained with ABflo® 647 Rabbit anti-Human CD93 mAb (A23013, 5 μ l/Test, orange line) or ABflo® 647 Rabbit IgG isotype control (A22070, 5 μ l/Test, blue line). Non-fluorescently stained cells were used as blank control (red line).



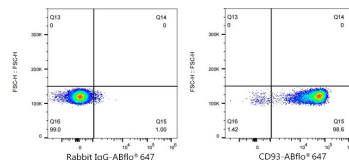
Flow cytometry: 1×10^6 Jurkat cells (negative control) were surface-stained with ABflo® 647 Rabbit anti-Human CD93 mAb (A23013, 5 μ l/Test, orange line) or ABflo® 647 Rabbit IgG isotype control (A22070, 5 μ l/Test, blue line). Non-fluorescently stained Jurkat cells were used as blank control (red line).



Flow cytometry: 1×10^6 U-937 cells were surface-stained with ABflo® 647 Rabbit IgG isotype control (A22070, 5 μ l/Test, left) or ABflo® 647 Rabbit anti-Human CD93 mAb (A23013, 5 μ l/Test, right).



Flow cytometry: 1×10^6 Human PBMC were surface-stained with ABflo® 647 Rabbit anti-Human CD93 mAb (A23013, 5 μ l/Test, orange line) or ABflo® 647 Rabbit IgG isotype control (A22070, 5 μ l/Test, blue line). Non-fluorescently stained cells were used as blank control (red line).



Flow cytometry: 1×10^6 Human PBMC were surface-stained with ABflo® 647 Rabbit IgG isotype control (A22070, 5 μ l/Test, left) or ABflo® 647 Rabbit anti-Human CD93 mAb (A23013, 5 μ l/Test, right).