

A22875

Leader in Biomolecular Solutions for Life Science



Yipf6 Rabbit pAb

Catalog No.: A22875

Basic Information

Observed MW

26kDa

Calculated MW

26kDa

Category

Polyclonal Antibody

Applications

WB, ELISA

Cross-Reactivity

Mouse, Rat

Background

Enables identical protein binding activity. Acts upstream of or within intestinal epithelial cell development. Located in COPII-coated ER to Golgi transport vesicle; cis-Golgi network; and trans-Golgi network. Orthologous to human YIPF6 (Yip1 domain family member 6).

Recommended Dilutions

WB 1:100 - 1:500

Immunogen Information

Gene ID

77929

Swiss Prot

Q8BR70

Immunogen

Recombinant fusion protein containing a sequence corresponding to amino acids 1-83 of mouse Yipf6(NP_997516.1).

Synonyms

A430107J06Rik; Yipf6

Contact



www.abclonal.com

Product Information

Source

Rabbit

Isotype

IgG

Purification

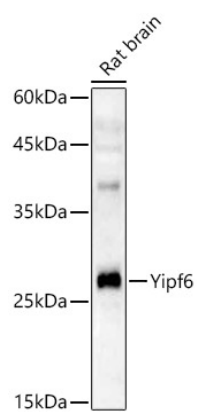
Affinity purification

Storage

Store at -20°C. Avoid freeze / thaw cycles.

Buffer: PBS with 0.05% proclin300, 50% glycerol, pH7.3.

Validation Data



Western blot analysis of lysates from Rat brain using Yipf6 Rabbit pAb (A22875) at 1:400 dilution.
Secondary antibody:HRP Goat Anti-Rabbit IgG (H+L)(AS014) at 1:10000 dilution.
Lysates/proteins: 25 µg per lane.
Blocking buffer: 3% nonfat dry milk in TBST.
Detection:ECL Enhanced Kit (RM00021).
Exposure time:90s.